



## BUREAU OF PRIMARY HEALTH CARE

# How to use the Unmet Need Score (UNS) Map Tool

We use the UNS to evaluate service area needs.

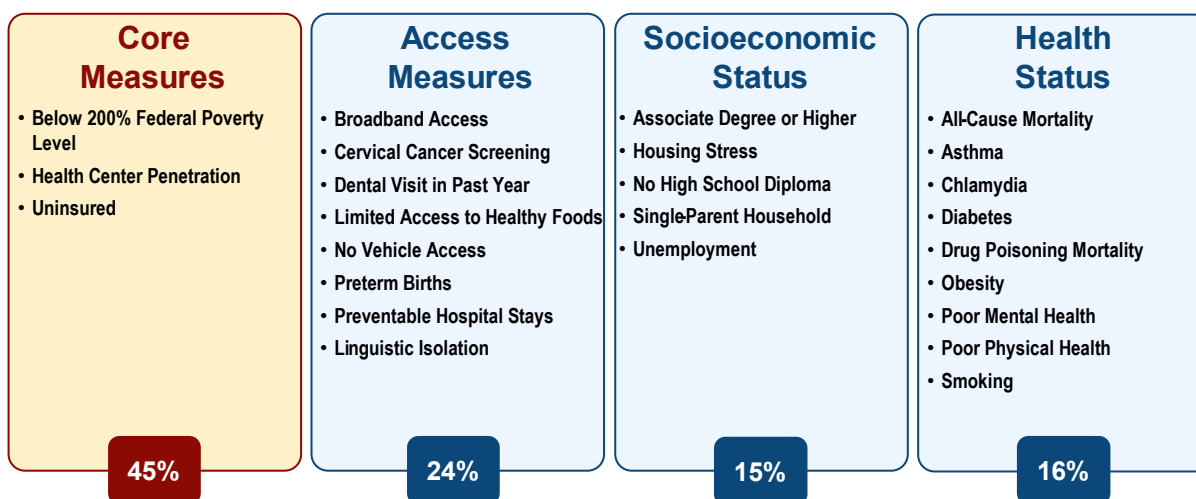
This tool shows data to help you determine if an area needs a new health care service site. You can use the map and service area data table to explore the UNS for a proposed health center service area.

Review the [UNS and Service Area Status \(SAS\) Resource Guide](#) for details about the measures that make up the UNS.

Note: This tool is for applicant planning purposes only. The outputs from the tool are not linked to an actual application. To learn how the UNS is used for New Access Points (NAP) applications, review the [NAP TA webpage](#).

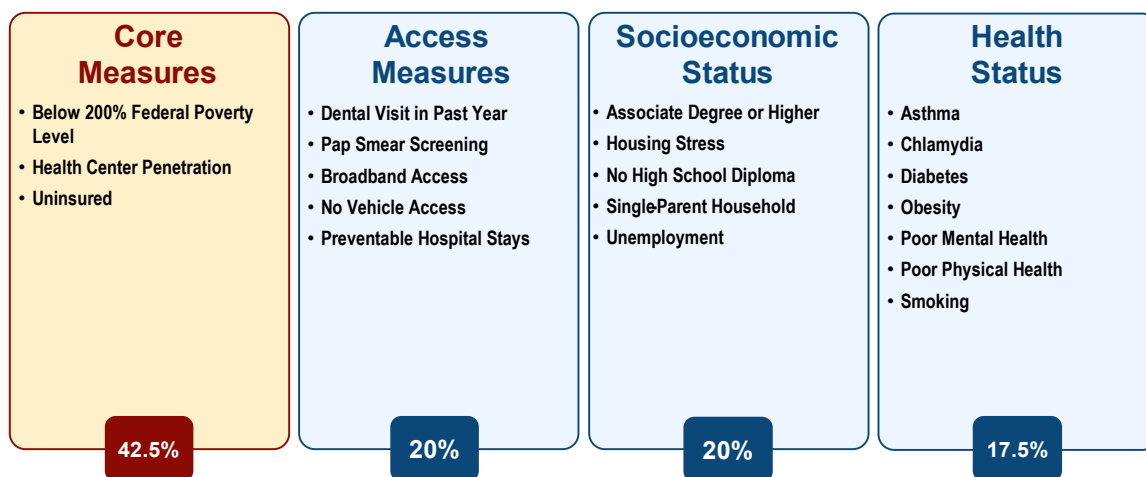
The UNS is made up of the following 25 measures for the 50 states and the District of Columbia (Figure 1).

**Figure 1:** Measures and Measure Weights for the UNS Calculation



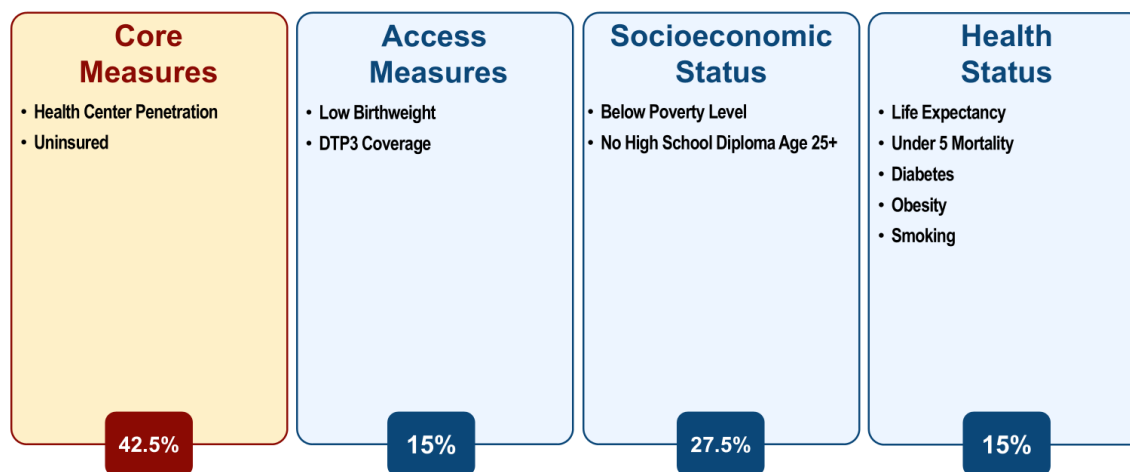
The UNS is made up of the following 20 measures for Puerto Rico (Figure 2).

**Figure 2: Measures and Measure Weights for the Puerto Rico UNS Calculation**



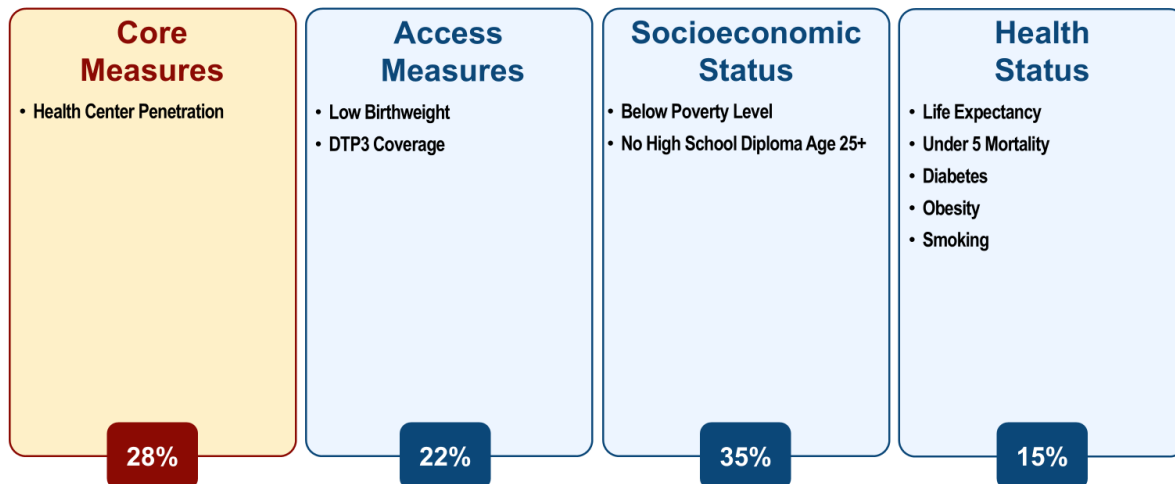
The UNS is made up of the following 11 measures for the other U.S. Territories (American Samoa, Commonwealth of the Northern Mariana Islands, Guam, and U.S. Virgin Islands) (Figure 3).

**Figure 3: Measures and Measure Weights for the U.S. Territories UNS Calculation Excluding Puerto Rico**



The UNS for the Freely Associated States (Federated States of Micronesia, Republic of Palau, and Republic of the Marshall Islands) is made up of the following 10 measures (Figure 4).

**Figure 4:** Measures and Measure Weights for the U.S. Freely Associated States UNS Calculation Excluding Puerto Rico



## How to Use This Tool

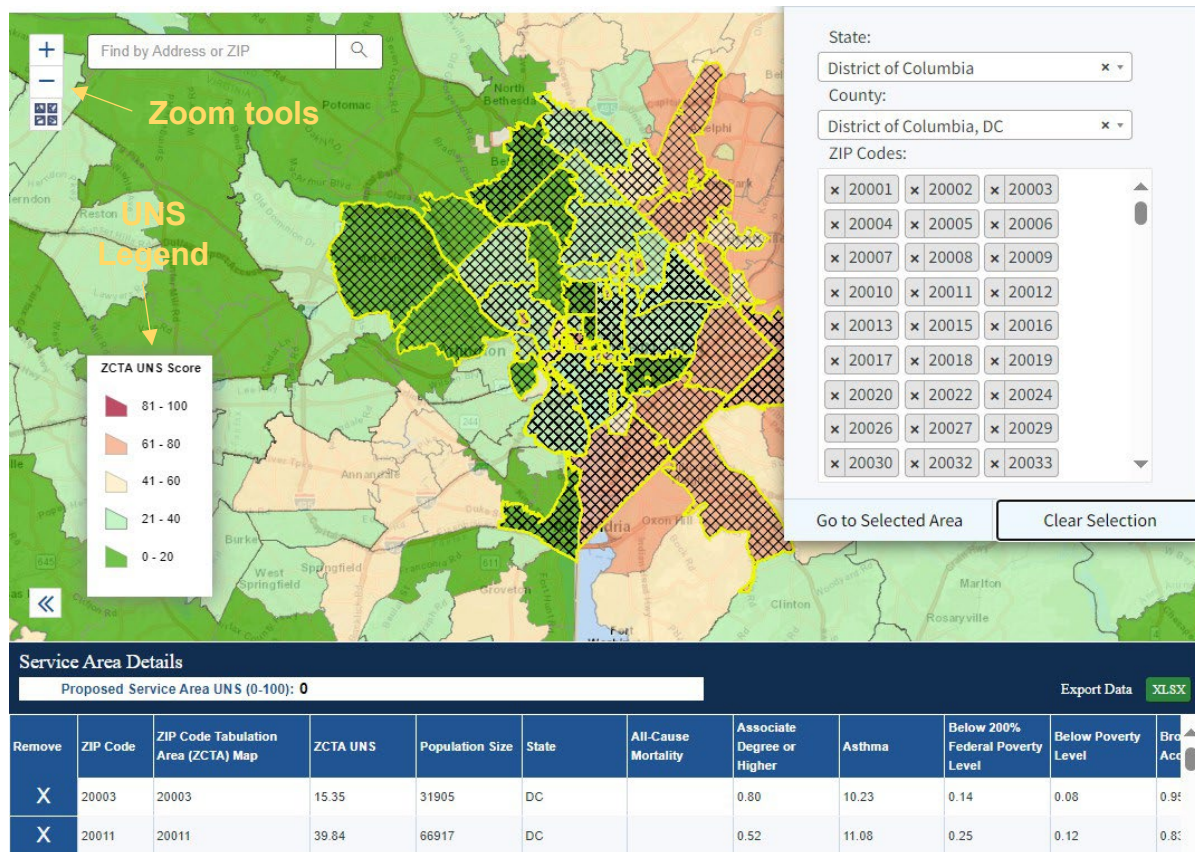
**To use this tool, select the ZIP Codes that make up your proposed service area.** The tool converts ZIP Codes to ZIP Code Tabulation Areas (ZCTAs) because the UNS is calculated at the ZCTA level. There are two options to add ZIP Codes to your proposed service area data table.

First, some general notes about the map:

- Use the “+” and “-” buttons on the map toolbar to **zoom in or out**. If you do not see the color-coded ZCTA map layer, zoom in closer.
- The color-coded ZCTA map layer will appear alongside the **legend** for scores ranging from 0-20, 21-40, 41-50, 61-80, and 81-100.
- ZIP Codes that you select as part of your proposed service area will have a yellow boundary and a black pattern fill. Selected ZIP Codes will be added to the Service Area Details table below the map.
- **Important:** If you refresh the browser, you will reset the map. The map tool will not save your settings.

Last updated: 04/16/2025

Web location(s): <https://data.hrsa.gov/topics/health-centers/sanam>

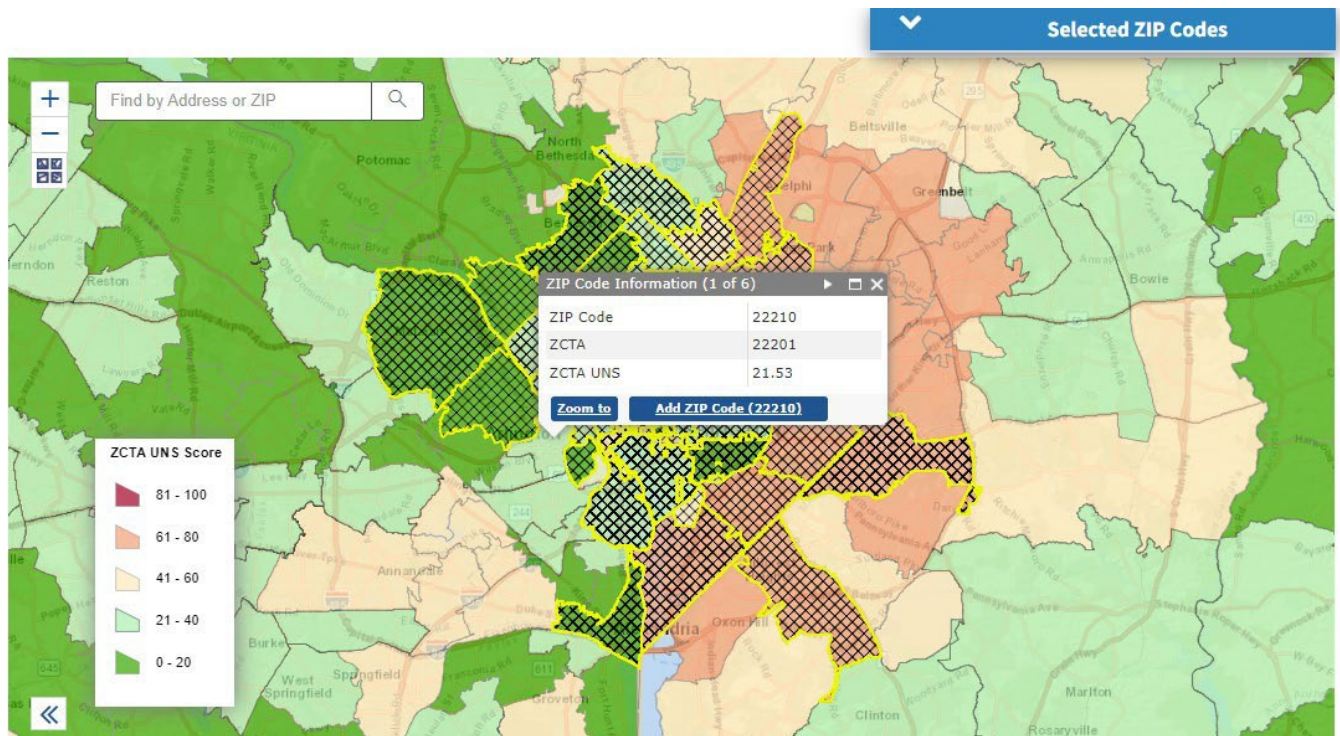


**Option A:** Use this option if you want to add ZIP Codes one at a time.

1. Enter a ZIP Code, city and state, or address into the map search box. You can also zoom into the area without entering into the search box.
2. Select the area to view a box with ZIP Code Information. The box has an option to add the ZIP Code.
3. Select on other nearby ZIP Codes until you have selected all the ZIP Codes in your proposed service area.

Last updated: 04/16/2025


Web location(s): <https://data.hrsa.gov/topics/health-centers/sanam>

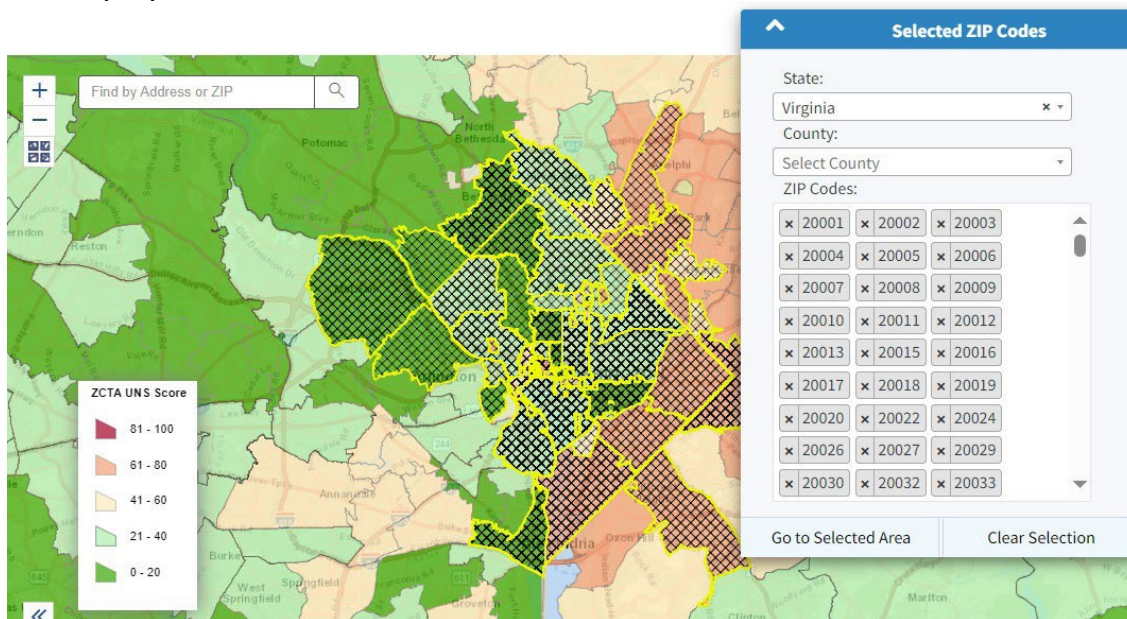


**Important:** The **add ZIP Code** option will not appear until you select the ZIP Code area on the map.



**Option B:** Use this option if your service area includes most of a county.

1. Expand the blue “Selected ZIP Codes” panel by selecting the down arrow .
2. Select a State and County to populate a list of ZIP Codes. Review the populated ZIP Codes because it could include some that are not in the selected county.
3. Select the “x” next to the listed ZIP Codes to remove any you do not want to include.
4. Select “Go to Selected Area” to zoom to the area and add all listed ZIP Codes.
5. Select other nearby ZIP Codes until you have selected all the ZIP Codes in your proposed service area.



## Helpful Tips

1. Review the map and table to make sure you selected all the ZCTAs for your proposed service area. There are a few ways to remove selections:
  - In the “Selected Zip Codes” panel, select the “x” next to a ZIP Code to remove it or select “Clear Selection” to remove all ZIP Codes.
  - In the Service Area Details table, select the “X” in the first column to remove the ZIP Code.
  - Select on the selected map area to display the pop-up ZIP Code Information box. Select “Remove ZIP Code”.
2. Review the Service Area Details table to learn about the UNS measures in your proposed service area.
3. The table shows each measure in two ways: actual measure value and percentile. The percentile is used to rank each measure. The higher the percentile, the higher the need.
4. There are a few ways to look at this data:
  - You can rearrange the columns by selecting the column header and dragging the column where you want it in the data table. For example, if you want to see the measure next to its percentile.
  - Since the measures are different for the 50 states, Puerto Rico, other U.S. territories, and the Freely Associated States, you may want to group the measures together that are used for the UNS in your area.
  - You can sort from high to low or low to high by selecting the column header, and then the arrow.
  - To export the Service Area Details table as an Excel file, select “XLSX” in the upper right corner of the table.
  - You can download the full UNS file as an Excel file (18.7 MB) from the link above the map. It includes data for every ZIP Code, including the corresponding ZCTA and UNS.
  - If a ZCTA has zero (0) population, that ZCTA does not have an UNS because it cannot be scored.

## Helpful Definitions

- **ZIP Code Tabulation Areas (ZCTAs)** were created by the U.S. Census Bureau to represent U.S. Postal Service ZIP Code service areas. ZCTAs represent geographic areas while ZIP Codes are point-based. This [crosswalk](#) shows that ZIP Codes and ZCTAs often align, but not always. More information on ZCTAs is available on the [ZCTAs web-page](#).
- **Unmet Need Score (UNS)** is a value from 0 to 100 that represents the unmet need for primary and preventive health care services in each ZCTA that makes up a service area. The higher the score, the higher the unmet need in a service area.

## Support

For technical issues with the map tool, contact us by using the [BPHC Contact Form](#).

Under Health Center Program, select Health Center Program (e.g., Unmet Need Score, Advancing Health Center Excellence Framework), then select Unmet Need Score.



Last updated: 04/16/2025

Web location(s): <https://data.hrsa.gov/topics/health-centers/sanam>