



Quick Start Guide

July 2026



Getting Started

Visit the **Ryan White HIV/AIDS Program (RWHAP) Compass Dashboard** at <https://data.hrsa.gov/topics/hiv-aids/rwhap-compass-dashboard>.

The **RWHAP Compass Dashboard** provides users an opportunity to interact with, visualize, and compare the reach, impact, and outcomes of the RWHAP across jurisdictions and providers. The Dashboard enables users to analyze data and trends among RWHAP populations, service use, and HIV outcomes to inform service prioritization and resource allocation.

The RWHAP Compass Dashboard includes available data from the five most recent years of the RWHAP Services Reports (**RSR**) and the AIDS Drug Assistance Program (ADAP) Data Reports (**ADR**). These data are organized across three pages that users can access through the links or their corresponding tabs at the top of the Dashboard's **Landing Page**.

This **Quick Start Guide** briefly describes the various ways users can interact with the content on each page of the **RWHAP Compass Dashboard** to:

- 1 **Explore Client Characteristics**
- 2 **View Services Used**
- 3 **Analyze Treatment Outcomes**

The screenshot shows the landing page of the Ryan White HIV/AIDS Program Compass Dashboard. At the top, there are navigation tabs: "Landing Page" (selected), "Explore Client Characteristics", "View Services Used", and "Analyze Treatment Outcomes". Below the tabs, a date indicator shows "Data as of 09/30/2025". The main header features the dashboard logo, which is a red speech bubble containing a blue compass needle, and the text "Ryan White HIV/AIDS Program Compass Dashboard". To the right is the HRSA logo, "Health Resources & Services Administration". Below the header, a descriptive sentence reads: "An interactive tool for visualizing the reach, impact, and outcomes of the RWHAP." The main content area is divided into three columns, each with a numbered icon and a title: 1. "Client Characteristics" with a group of people icon, description: "Explore RWHAP client characteristics by year, jurisdiction, and service provider." 2. "Services Used" with a clipboard and plus sign icon, description: "View RWHAP service categories across states, metropolitan areas, and service providers." 3. "Treatment Outcomes" with a compass icon, description: "Analyze viral suppression data and performance ratings by year, client characteristic, jurisdiction, and providers." A large "SAMPLE" watermark is overlaid across the center of the dashboard.

General Tips and Features

On each page of the RWHAP Compass Dashboard, users will find several interactive ways to view the data, including:

- » Selecting **individual jurisdictions, recipients, and service providers** by name to display their data
- » Using drop-down **filters** in each section to customize the type of information displayed
- » Hovering over the **charts and maps** for more details
- » Hovering over **information icons** to learn more about data selections

Some handy tips for users to keep in mind as they navigate the RWHAP Compass Dashboard:

- » The **Data Selections** panel at the top of each page will determine the information shown on the entire page (context cards, maps, charts, graphs, and tables). The Client Characteristics and Services Used page is where the user chooses a data source—**RSR** or **ADR**.

! RSR or ADR

Key Differences by Data Source

- » On the **Client Characteristics** and **Services Used** pages, users can view data by either the **RWHAP Services Report (RSR)** or the **ADAP Data Report (ADR)**.
- » The data available for display differ for each data source due to the types of data in each report.

RSR	ADR
State/territory Metropolitan areas Service providers	State/territory

- » These differences are highlighted throughout the Quick Start Guide.
- » See the Dashboard User Guide for additional details about the data sources.

DATA SELECTIONS

Select a data source

Select a calendar year

Select a client characteristic

Select a specific category

Ryan White HIV/AIDS Program (RWHAP) Services Report (RSR) Client Characteristics

50 to 64 years old - 2024

Compare Jurisdictions

Select a jurisdiction type

Select a census region

Select a specific jurisdiction

Select a value type

Hover over a jurisdiction to view details

United States, 2024
Number of people with diagnosed HIV

1,116,600

National HIV Surveillance System (CDC)

United States, 2024
Number of RWHAP clients

601,853

RSR (HIV/AIDS Bureau, HRSA)

United States, 2024
Percentage of people with diagnosed HIV who are RWHAP clients

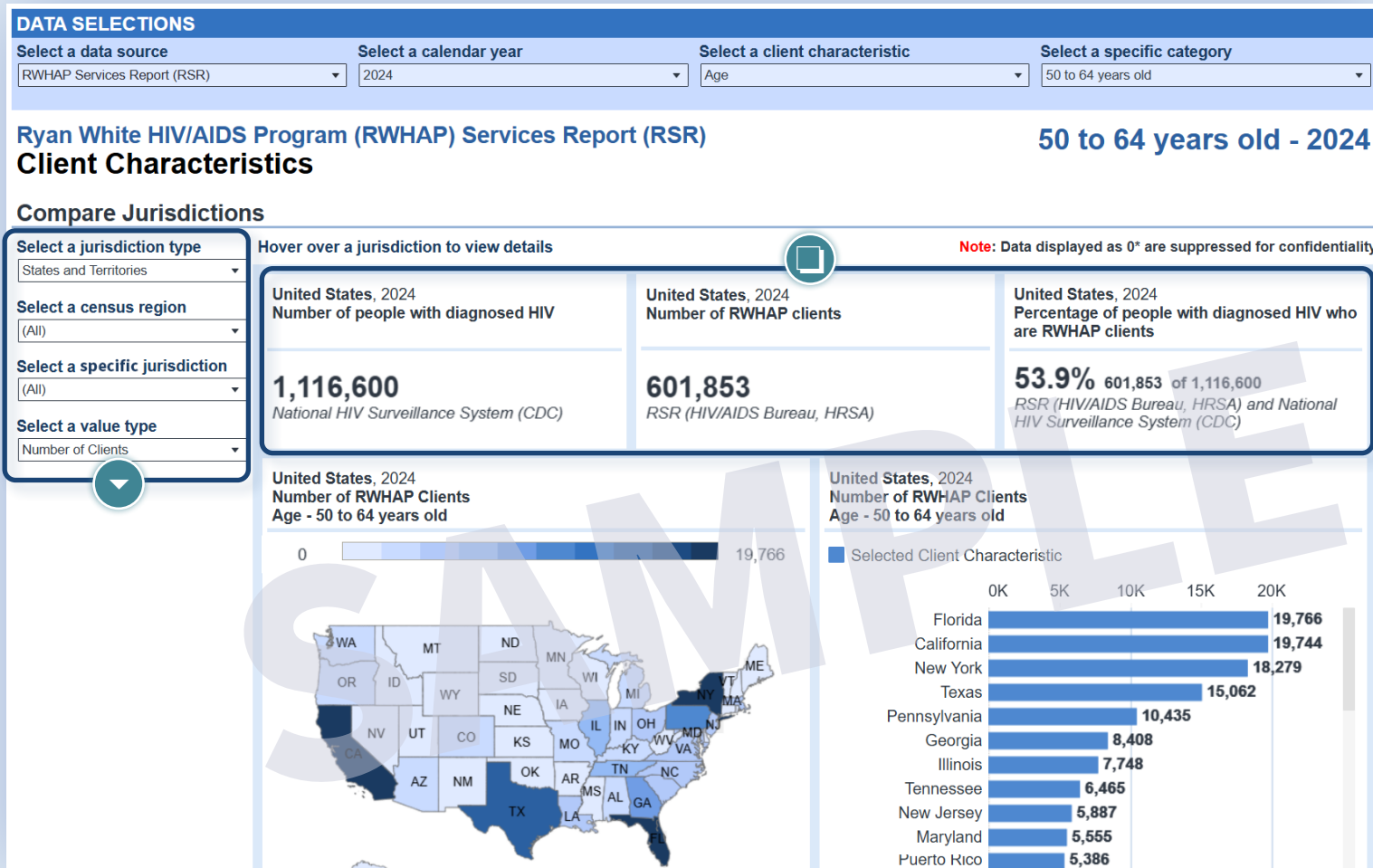
53.9%

601,853 of 1,116,600
RSR (HIV/AIDS Bureau, HRSA) and National HIV Surveillance System (CDC)

General Tips and Features (continued)

- ▼ The drop-down **filters** on the left within each section of a page (e.g., **Compare Jurisdictions**) determine the information shown in that section.
 - **Exception:** The jurisdiction filter on the **Client Characteristics** and **Treatment Outcomes** pages determines the information shown on the entire page (context cards, maps, charts, graphs, and tables), not just the information in the specific section.

- ◻ Each page displays three **context cards** at the top. These cards display data from the RSR, the ADR, and the Centers for Disease Control and Prevention’s (CDC) National HIV Surveillance System (NHSS). Data from the CDC NHSS provide context for interpreting national RWHAP data on each page.

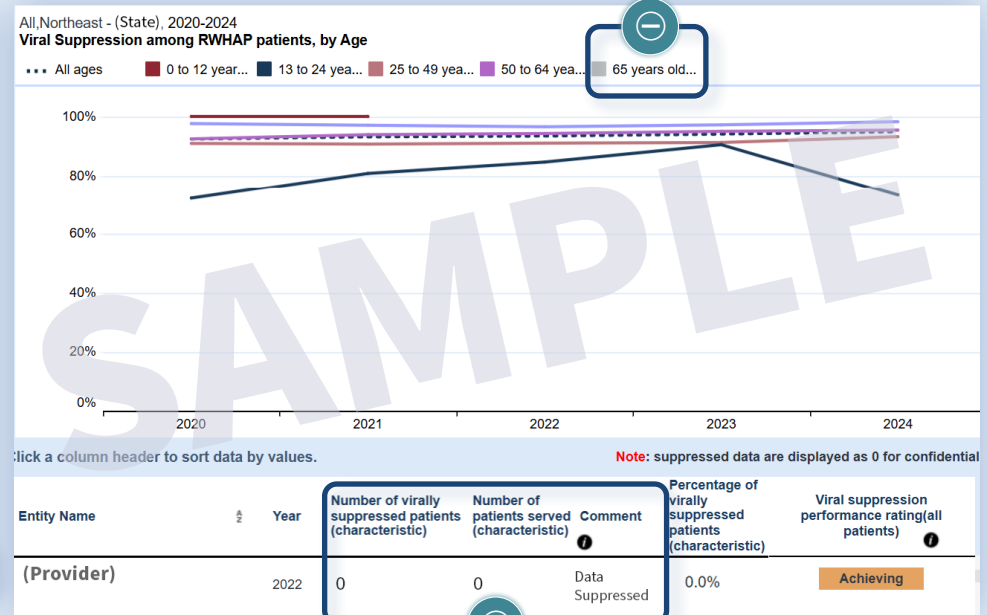
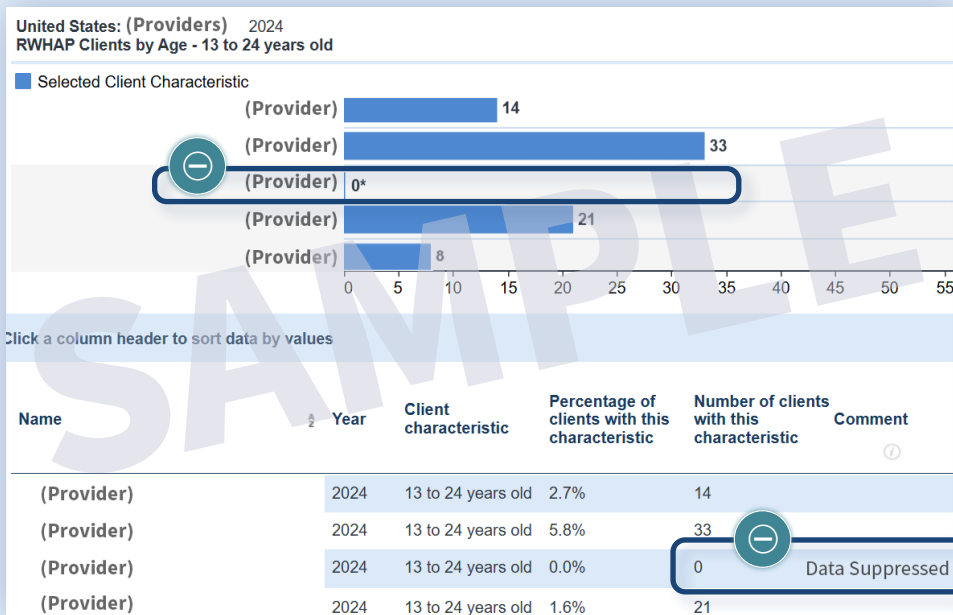


General Tips and Features (continued)

- ⊖ The Dashboard **suppresses values based on one through four (1-4) clients or patients** due to concerns about client confidentiality. These values are displayed as **0*** in the maps and bar charts. In the tables, they are shown as **0** with a note in the Comment column. In line graphs, these data are not displayed.

- ↶ To **reset selections**, click the **Reset view** button in the toolbar at the bottom left-hand corner of the Dashboard. This will reset all selections on the page.
- ↶ You can also select the **Undo my last action** option to undo only the last selection.

The rest of this Quick Start Guide explains how to use these features to create the most useful displays.



↶

Undo my last action

↶

Reset view

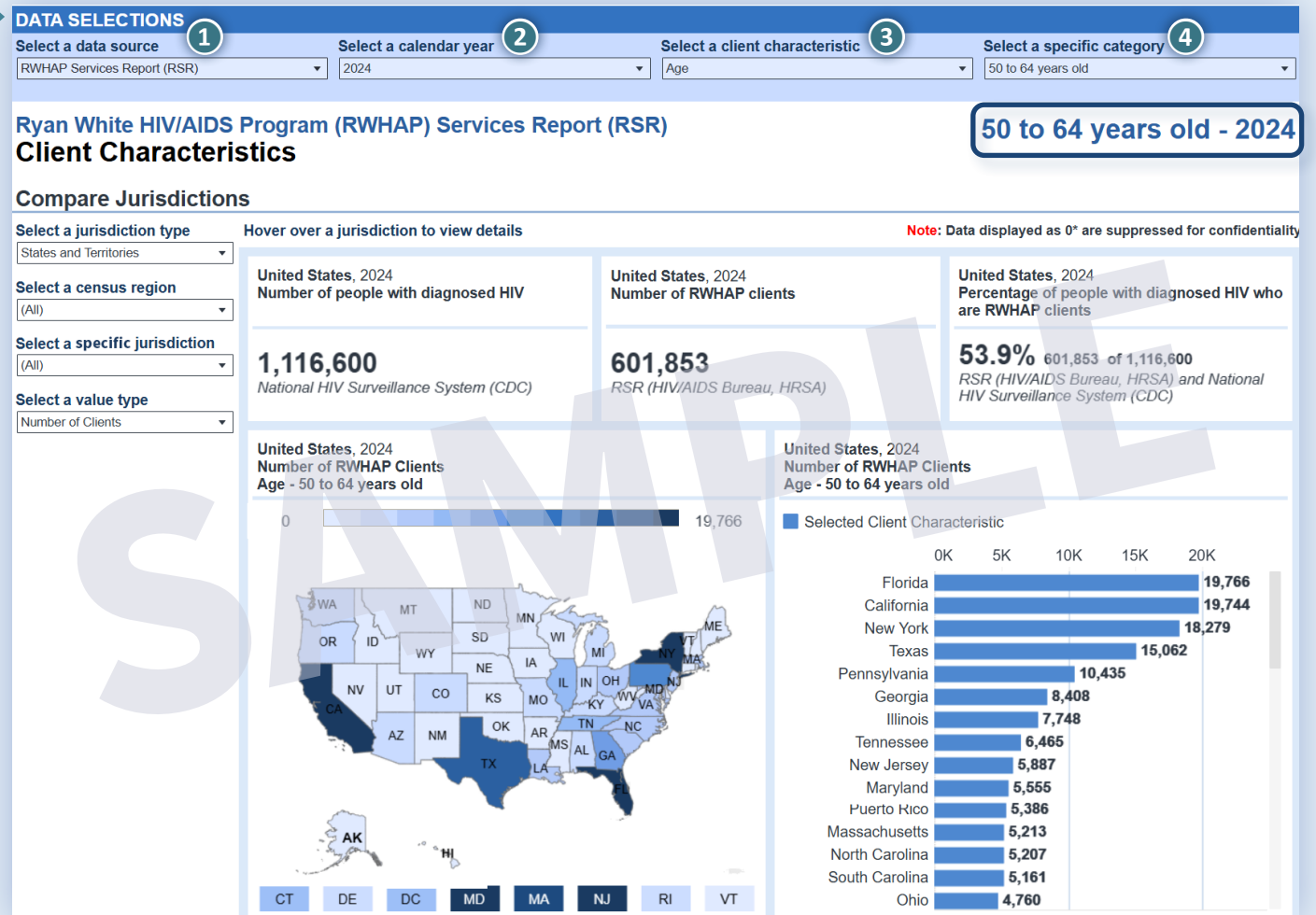
View: Original Save Custom View Share

Explore Client Characteristics

The **Client Characteristics** page enables the user to compare client demographics by calendar year, jurisdiction, and service provider. When the user first navigates to the Client Characteristics page, the page displays data for all clients included in the RSR in the most recent calendar year. Use the **Data Selections** panel to run what data appear on the entire page.

Data Selections

- 1 Select a **data source**, either **RSR** or **ADR**.
- 2 Select a **calendar year**, either 2020–2024 (**RSR**) or 2019–2023 (**ADR**).
- 3 Select a **client characteristic**, choosing from Age, Federal Poverty Level, Health Care Coverage, Housing Status, Race/Ethnicity, or Sex.
- 4 Filter the selected client characteristic by a **specific category** (for example, if a user selects Age as the client characteristic, the specific category filter will enable the user to choose a specific age category to display—for example, 50 to 64 years old).



Explore Client Characteristics (continued)

The **Compare Jurisdictions** section enables the user to compare client characteristics across jurisdictions. The information in the three **context cards** will change to reflect the selections made in this section.

The user-selected options will display in the map and the horizontal bar chart. The client characteristics displayed in this section are determined by

the choices the user makes in the Data Selections panel. For example, if the user selects RSR, 2024, Age, and 50 to 64 years old in the Data Selections panel, only RSR data for clients who are 50 to 64 years old in that data year will display.

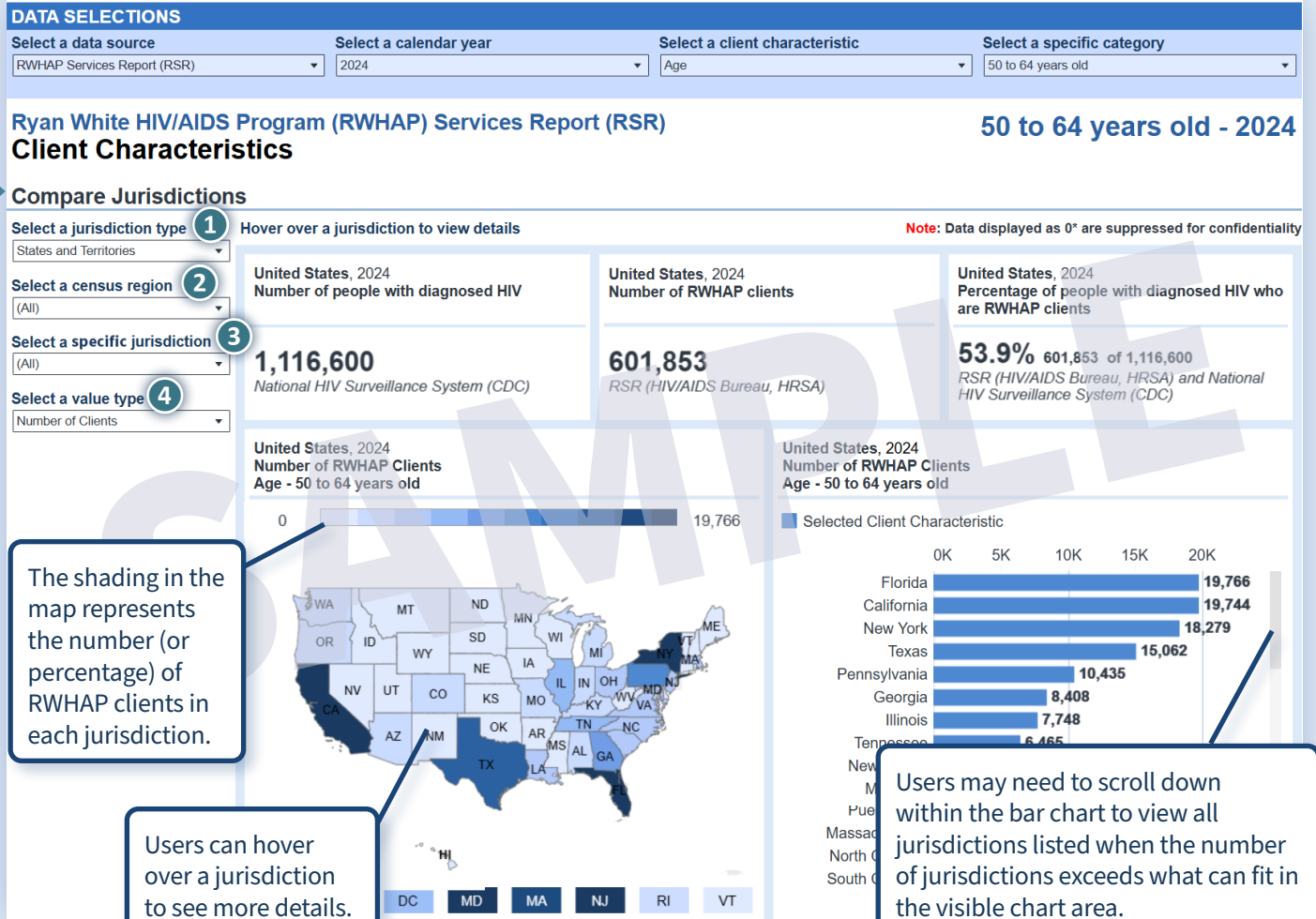
Compare Jurisdictions

- 1 Select a **jurisdiction type**, either states and territories or metropolitan areas (**RSR** only).
- 2 Select a **census region** to focus the map and bar chart on a specific region.
- 3 Select a **specific jurisdiction** to focus the map on a specific jurisdiction (e.g., a state); the bar chart will continue to show the jurisdiction and its surrounding census region. If a census region is not selected, the bar chart will show all jurisdictions.
- 4 Select the **value type**, either number of clients or percentage of clients.

RSR or ADR

Key Differences by Data Source

Only **RSR** data have metropolitan areas. Therefore, the jurisdiction type "Metropolitan Areas" is only available when **RSR** is selected as the Data Source.



Explore Client Characteristics (continued)

The **Compare Service Providers** section enables the user to compare client characteristics across service providers. It also enables the user to view individual service providers by name.

The information will be displayed in a horizontal bar chart and a table. Users can hover over a bar in the chart to see more details. The options available

to view in this section will be determined by the selections made in the **Data Selections** panel and the **Compare Jurisdictions** section. For example, if the user selects RSR and 2024 in the Data Selections panel and Alabama in the Compare Jurisdictions section, only service providers in Alabama and only clients in the 2024 RSR will display.

Compare Service Providers

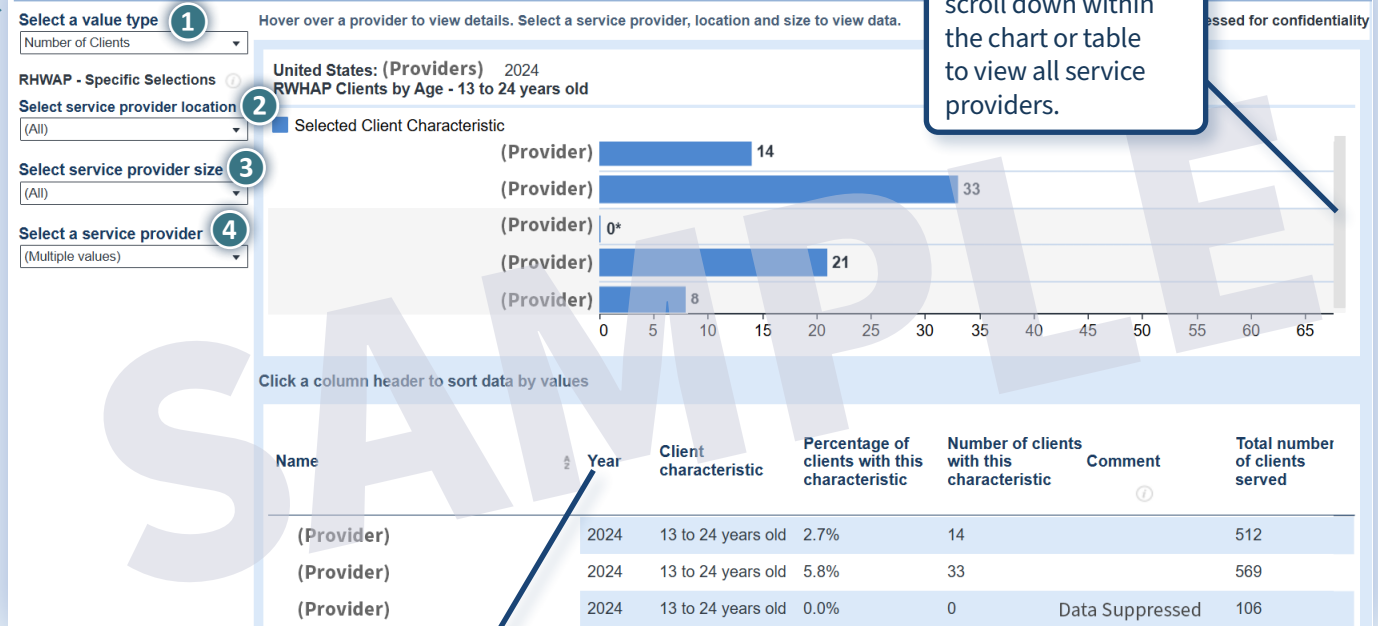
- 1 Select the **value type**, either number of clients or percentage of clients.
- 2 Select a **service provider location**, choosing from all provider locations, nonrural, or rural.
- 3 Select a **service provider size**, choosing from all provider sizes, 1 to 99 clients, 100 to 199 clients, 200 to 499 clients, or 500 clients or more.
- 4 Select a **service provider** by name.

RSR or ADR

Key Differences by Data Source

The Compare Service Providers section is only available when the data source is **RSR**. This is because ADAP services are delivered by the state and do not include service providers.

Compare Service Providers - RSR only



View Services Used

The **Services Used** page enables users to view **RSR** and **ADR** service categories across states and territories, metropolitan areas, and service providers over time. Again, use the **Data Selections** panel to run what data appear on the entire page.

Data Selections

- 1 Select a **data source**, either **RSR** or **ADR**.
- 2 Select a **jurisdiction type**, either state and territories or metropolitan areas (**RSR** only).
- 3 Filter to a **specific jurisdiction**, selecting a specific state, territory, or metropolitan area. For example, if **metropolitan areas** is selected, the user could select a specific metropolitan area such as Atlanta, GA.

RSR or ADR

Key Differences by Data Source

Only **RSR** data have metropolitan areas. Therefore, the jurisdiction type "Metropolitan Areas" is only available when **RSR** is selected as the Data Source.

DATA SELECTIONS

Select a Data Source RWHP Services Report (RSR) | Select jurisdiction type States and territories | Select a specific jurisdiction (State)

Ryan White HIV/AIDS Program (RWHP) Services Report (RSR)

Services used in (State)

Compare Service Use

Select a service type ✕

Core medical services

Select a timeframe

Most recent year

Select a value type

Number of Clients

Hover over a service to view details Note: Data displayed as 0* are suppressed for confidentiality

2024 Number of RWHP core medical and support service categories	(State), 2024 Percentage who used core medical services of RWHP clients who received services	(State), 2024 Percentage who used support services of RWHP clients who received services
26 <i>RSR (HIV/AIDS Bureau, HRSA)</i>	94.0% 10,910 of 11,606 <i>RSR (HIV/AIDS Bureau, HRSA)</i>	80.9% 9,385 of 11,606 <i>RSR (HIV/AIDS Bureau, HRSA)</i>

(State), Most recent year
Number of clients using services, by service category

■ Core medical services

Service category	Number of Clients
Medical case management, including treatment adherence serv..	8,399
Outpatient/ambulatory health services	6,687
Health insurance premium and cost sharing assistance	3,670
Medical nutrition therapy	2,137
Mental health services	1,639
Early intervention services	1,358
Oral health care	1,345
Substance misuse outpatient care	1,217

View Services Used (continued)

The **Compare Service Use** section enables users to compare the number or percentage of clients receiving **RSR** or **ADR** services by service category.

The options available to view in this section will be determined by the selections made in the **Data Selections** panel. For example, if the user selects

RSR and Alabama in the Data Selections panel, only service providers in Alabama and only clients in the RSR will be displayed. The information will display in a horizontal bar chart.

Compare Service Use

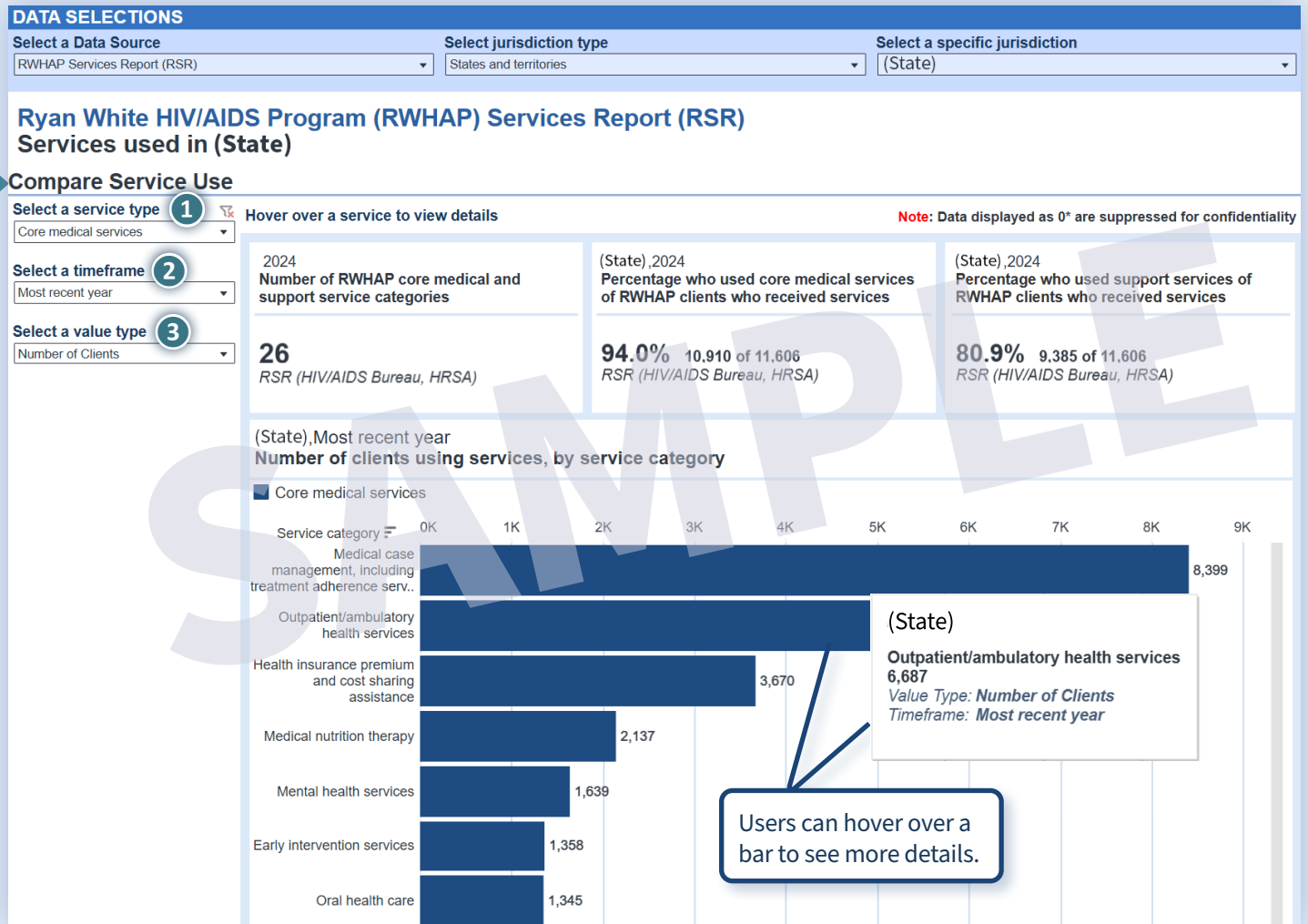
- 1 Select **service type**, either all, core medical, or support services (for **RSR**) or all ADAP services, including medication support and insurance premium assistance (for **ADR**).
- 2 Select a **timeframe**, either most recent year or five-year trend.
- 3 Select a **value type**, either number of clients or percentage of clients who used a given service.

RSR or ADR

Key Differences by Data Source

When Data Source = **RSR**, service types include core medical and support services.

When Data Source = **ADR**, service types include all ADAP services.



View Services Used (continued)

The **Compare Service Providers** section enables users to compare services delivered by service providers.

The options available to view in this section will be determined by the selections made in the **Data Selections** panel. For example, if the user selects RSR and

Alabama, only service providers in Alabama and only service categories in the RSR will display.

You must select a **“Specific Jurisdiction”** in the **Data Selections** panel for the **Service Providers** to appear in the filter.

Compare Service Providers

- 1 Select individual **service providers** by name.
- 2 Select the **service category**, choosing all or one of the services for **RSR**.
- 3 Select the **value type**, either number of clients or percentage of clients who used a given service.

! RSR or ADR

Key Differences by Data Source

The Compare Service Providers section is only available when the data source is **RSR**. This is because ADAP services are delivered by the state and do not include service providers.

DATA SELECTIONS

Select a Data Source: RWHAP Services Report (RSR) | Select jurisdiction type: States and territories | Select a specific jurisdiction: (State)

Compare Service Providers - RSR only ⓘ Note: suppressed data are not displayed for confidentiality

Select service provider: (Multiple values) ⓘ | Selected Service providers in (State) | Number of clients using All

Select a service category: (All) ⓘ | (Provider) | (Provider) | (Provider)

Select a value type: Number of Clients ⓘ

Click a column header to sort data by values

Note: suppressed data are displayed as 0 for confidentiality

Service provider name	Year	Service category	Number of clients using service	Comment	Percentage of clients using service
(Provider)	2024	Food bank/home delivered meals	1,260		
		Non-medical case management			

Click the column headers in the table to sort the rows in ascending or descending order.

Analyze Treatment Outcomes

The **Treatment Outcomes** page allows users to compare viral suppression outcomes and standardized viral suppression performance ratings by year, jurisdiction, recipient, and service provider.

Viral suppression outcomes are based on RWHAP clients who received outpatient ambulatory health services (OAHS) and had a viral load test during the reporting year. RWHAP clients that did not receive an OAHS during the reporting year and those who received ADAP services only during the reporting year are not included on this page.

Viral suppression **values** are available by specific client characteristic categories (such as 50 to 64 years old, when Age is selected as the client characteristic). However, standardized viral suppression performance **ratings** are always presented at the jurisdiction, recipient, or service provider level. The viral suppression performance **rating** will be based on all patients for the selected jurisdiction (top panel) or recipient/service provider (bottom panel) and do not change if a specific client characteristic category is selected. Use the **Data Selections** panel to run what data appear on the entire page.

1 RSR or ADR

Key Differences by Data Source

Treatment outcomes for clients that received OAHS are available in RSR data.

Data Selections

- 1 Select a **calendar year**, 2020–2024.
- 2 Select a **client characteristic**, choosing from Age, Federal Poverty Level, Health Care Coverage, Housing Status, Race/Ethnicity, or Sex.
- 3 Filter the selected client characteristic by **specific category** (for example, if a user selects Age as the client characteristic, the specific category filter will ask the user to choose the age category to display, e.g., 50 to 64 years old).

DATA SELECTIONS

Select a calendar year **1** Select a client characteristic **2** Select a specific category **3**

2023 All Patients All patients

Ryan White HIV/AIDS Program (RWHAP) Services Report (RSR) **All patients - 2023**

Viral Suppression

Compare Jurisdictions

Select a jurisdiction type: States and territories

Select a census region: (All)

Select a specific jurisdiction: (All)

Select a value type: Viral Suppression

*Note: Data displayed as 0 * are suppressed for confidentiality*

United States, 2023	United States, 2023	United States, 2023
Percentage of people with diagnosed HIV who are virally suppressed	Percentage of RWHAP patients who are virally suppressed	Percentage of RWHAP patients with prescribed antiretroviral therapy
64.8% 723,143 of 1,116,600 <i>National HIV Surveillance System (CDC)</i>	90.6% 339,855 of 375,259 <i>RSR (HIV/AIDS Bureau, HRSA)</i>	97.9% 367,459 of 375,259 <i>RSR (HIV/AIDS Bureau, HRSA)</i>

United States, 2023	United States, 2023
Viral suppression among RWHAP patients	Viral suppression among RWHAP patients
40.0%	-- United States

Analyze Treatment Outcomes (continued)


The **Compare Jurisdictions** section enables users to compare viral suppression outcomes and standardized viral suppression performance ratings across jurisdictions.

The information in this section will be displayed in a map and a horizontal bar chart. The options available to view in this section will be determined by the selections made in the Data Selections panel. For example, if the user selects 2024, Age, and 50 to 64 Years old in the Data Selections panel, only viral suppression values for 50 to 64 year old patients who received an

OAHS and had a viral load test in 2024 will display. The standardized **viral suppression performance ratings** are not reported by client characteristics and therefore do not change if a specific client characteristic category is selected.

To learn more about the methodology for the standardized **viral suppression performance ratings** and the interpretation of these ratings, see the **Dashboard User Guide** and **Standardized Viral Suppression Performance Fact Sheet**, available for download from the RWHAP Compass Dashboard.

Compare Jurisdictions

- 1 Select a **jurisdiction type**, either states and territories or metropolitan areas.
 - 2 Select a **census region** to focus the map and bar chart on a specific region.
 - 3 Select a **specific jurisdiction** to focus the map and bar chart on the jurisdiction and its surrounding census region.
 - 4 Select the **value type**, either viral suppression or viral suppression performance rating. (Note, the horizontal bar chart will always show viral suppression regardless of what is selected for the value type.)
-  The information in the three **context cards** will change to reflect the jurisdiction and region chosen in this section.

Compare Jurisdictions

- 1 Select a **jurisdiction type**
States and territories
- 2 Select a **census region**
Midwest
- 3 Select a **specific jurisdiction**
(All)
- 4 Select a **value type**
Viral Suppression

Hover over a jurisdiction to view details

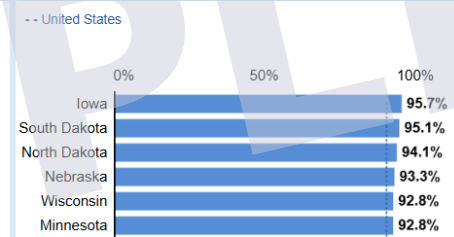
Note: Data displayed as 0 * are suppressed for confidentiality

Midwest, 2023 Percentage of people with diagnosed HIV who are virally suppressed	Midwest, 2023 Percentage of RWHAP patients who are virally suppressed	Midwest, 2023 Percentage of RWHAP patients with prescribed antiretroviral therapy
65.8% 88,662 of 134,771 <i>National HIV Surveillance System (CDC)</i>	90.7% 45,501 of 50,191 <i>RSR (HIV/AIDS Bureau, HRSA)</i>	98.8% 49,599 of 50,191 <i>RSR (HIV/AIDS Bureau, HRSA)</i>

Midwest, 2023
Viral suppression among RWHAP patients



Midwest, 2023
Viral suppression among RWHAP patients



The shading on the map represents the **viral suppression** value (or standardized viral suppression rating) among patients who received an OAHS and had a viral load test in each year and jurisdiction.

Users can hover over a jurisdiction to see more details.

(State) 2023
Viral suppression among RWHAP patients
Category: All patients
87.8%
13,873 of 15,794 patients

Analyze Treatment Outcomes (continued)

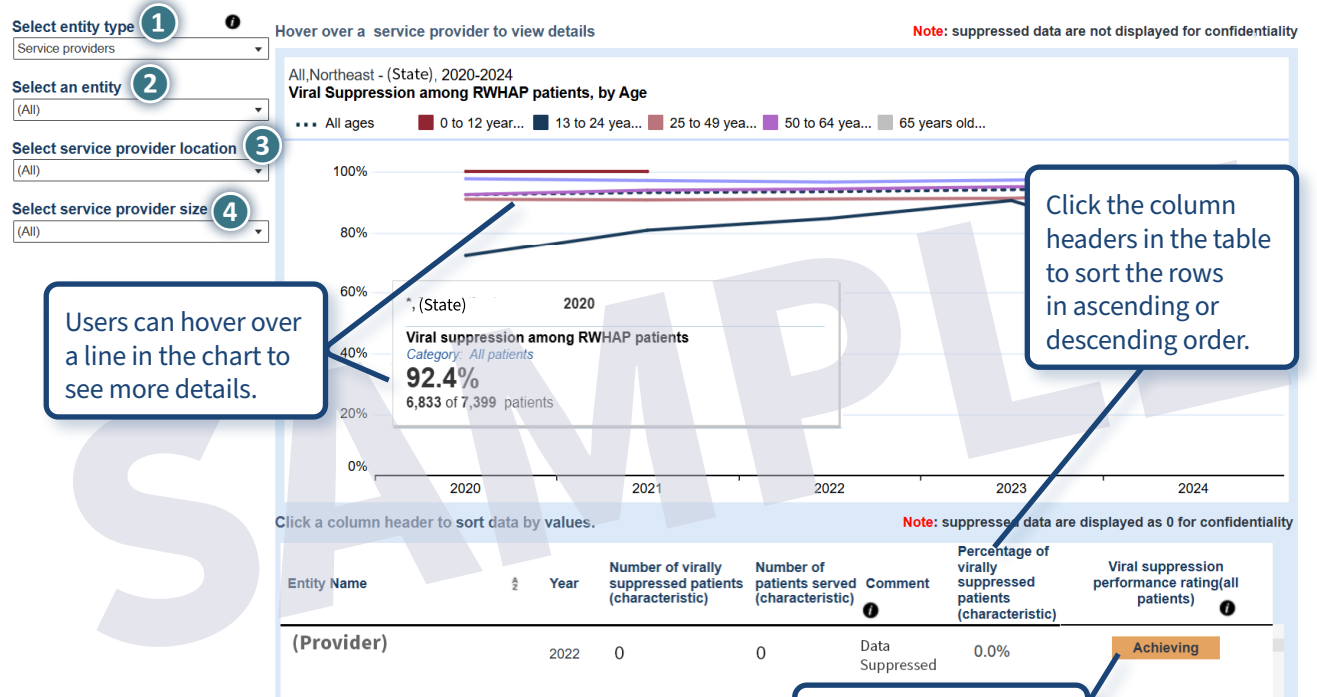
The **Compare Service Providers** section enables users to track viral suppression outcomes over time for selected recipients and service providers. This is the only section in the Dashboard that shows data aggregated at the recipient level, with a recipient defined as an organization directly funded under RWHAP Parts A, B, C, or D and its subrecipient service providers. Only recipients and subrecipients funded for OAHs are included in the aggregation. Information will be displayed in a line chart and a table. The options available to view in this section will be determined by the choices made in the **Data Selections** panel and the **Compare Jurisdictions** section.

For example, if the user selects 2024 and Age and All Patients in the Data Selections panel and Alabama in the **Compare Jurisdictions** section, only recipients and service providers in Alabama and only clients who received an OAHs and had a viral load test in 2024 will display (by age categories). The standardized **viral suppression performance ratings** are displayed at the recipient and service provider levels only and appear in the last column in the table. These ratings do not change when a specific client characteristic category is selected.

Compare Service Providers

- 1 Select an **entity type**, either recipient or service provider.
- 2 Select an individual **entity** (recipient or service provider) by name.
- 3 Select a **service provider location**, choosing all provider locations, nonrural, or rural.
- 4 Select a **service provider size**, choosing one of the following: all provider sizes, 1 to 99 patients, 100 to 199 patients, 200 to 499 patients, 500 patients or more.

Compare Service Providers



Users can hover over a line in the chart to see more details.

Click the column headers in the table to sort the rows in ascending or descending order.

Viral suppression performance ratings

Need More Help?

Users can view the full **RWHAP Compass Dashboard User Guide**, available on the RWHAP Compass Dashboard, to find:

- » Information about the data sources
- » Description of standardized viral suppression performance ratings
- » Data aggregation methodology
- » Key terms and definitions

✉ For further assistance, contact the RWHAP Compass Dashboard mailbox at RWHAPCompass@mathematica.org.

