



# Bureau of Health Workforce (BHW) Footprint Map

## User Guide

**Bureau of Health Workforce (BHW)**  
**Health Resources and Services Administration (HRSA)**



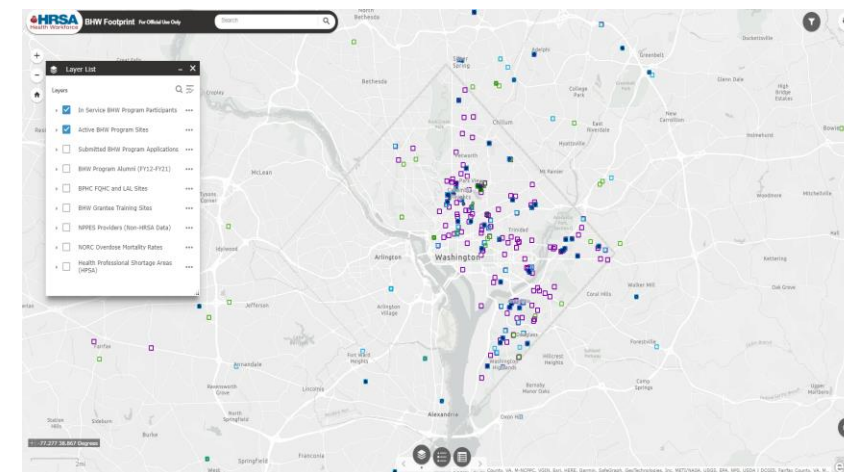
# Bureau of Health Workforce (BHW) Footprint Map Overview

## BHW Footprint Map

This **BHW Footprint** map application provides a nearly real-time view of BHW's assets and other relevant health workforce data sets in relation to one another.

### Data Layers (part 1)

- **In Service BHW Program Participants:** This data layer displays pins for National Health Service Corps (NHSC), Nurse Corps, and Substance Use Disorder Treatment and Recovery (STAR) program participants who are currently in service at their associated site locations. These numbers change daily; final year end field strength can be found in the BHW Field Strength Dashboards. The data in this layer is updated daily.
- **Active BHW Program Sites:** This data layer displays pins for a site at which a participant can fulfill a service obligation for a BHW program. Only sites with an active BHW program affiliation for National Health Service Corps (NHSC), Nurse Corps, and Substance Use Disorder Treatment and Recovery (STAR) are displayed. The data in this layer is updated daily.
- **Submitted BHW Program Applications:** This data layer displays pins for individuals who submitted eligible applications for BHW programs (NHSC, Nurse Corps, and STAR) during the FY2020-2023 application cycles. The pin is at the applicant's site location. The data in this layer is updated daily.
- **BHW Program Alumni (FY12-FY21):** This data layer displays pins for the current work locations of clinicians who have completed service or training through one of the following BHW programs: NHSC, Nurse Corps, Teaching Health Center Graduate Medical Education (THCGME), and Children's Hospitals Graduate Medical Education Payment (CHGME). The data in this layer is updated on an annual basis.
- **BPHC FQHC & LAL Sites:** This data layer displays all Federally Qualified Health Centers (FQHC) and Look-Alike (LAL) Sites recognized by the Bureau of Primary Health Care (BPHC) and is sourced from the HRSA Data Warehouse (HDW). The data in this layer is updated daily.



**Feedback?** Contact us at [BHWData@hrsa.gov](mailto:BHWData@hrsa.gov) with the subject: **BHW Footprint Map**



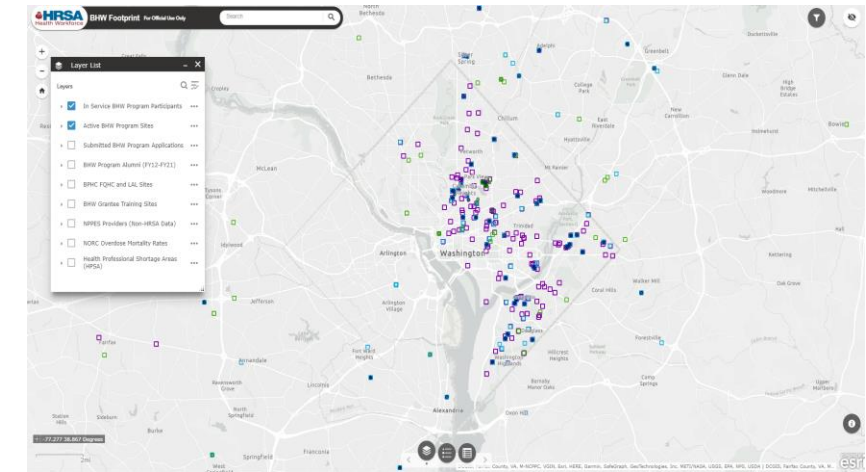
# Bureau of Health Workforce (BHW) Footprint Map Overview

## BHW Footprint Map

This **BHW Footprint** map application provides a nearly real-time view of BHW's assets and other relevant health workforce data sets in relation to one another.

## Data Layers (part 2)

- **BHW Grantee Training Sites:** This data layer displays pins for training site locations across all of BHW's grant programs. This layer can also be viewed as aggregate data at the zip code and state levels. The data in this layer is updated on an annual basis.
- **National Plan and Provider Enumeration System (NPPES) Providers:** This data layer displays the aggregate counts of healthcare providers in a given County or State. The data is based on provider-reported primary practice addresses and is sourced from the Center for Medicare and Medicaid's (CMS) National Plan and Provider Enumeration System (NPPES). The data in this layer is updated on a monthly basis. Details on taxonomies included can be found on page 16.
- **Health Professional Shortage Areas (HPSAs):** This data layer displays polygons of designations with the HPSA score (Primary Care, Mental Health, Dental Health). All Geographic and Population HPSAs with a status of Designated or Proposed for Withdrawal are included. The data in this layer reflects the current status as of 10 pm EST of the previous night. The data in this layer is updated daily.
- **NORC Overdose Mortality Rates:** This data layer displays the rate of overdoses from opioids and all drugs for a county. This data layer is sourced from the National Opinion Research Center (NORC) at the University of Chicago. The data in this layer is updated on an annual basis.



**Feedback?** Contact us at [BHWData@hrsa.gov](mailto:BHWData@hrsa.gov) with the subject: **BHW Footprint Map**

# Getting Started

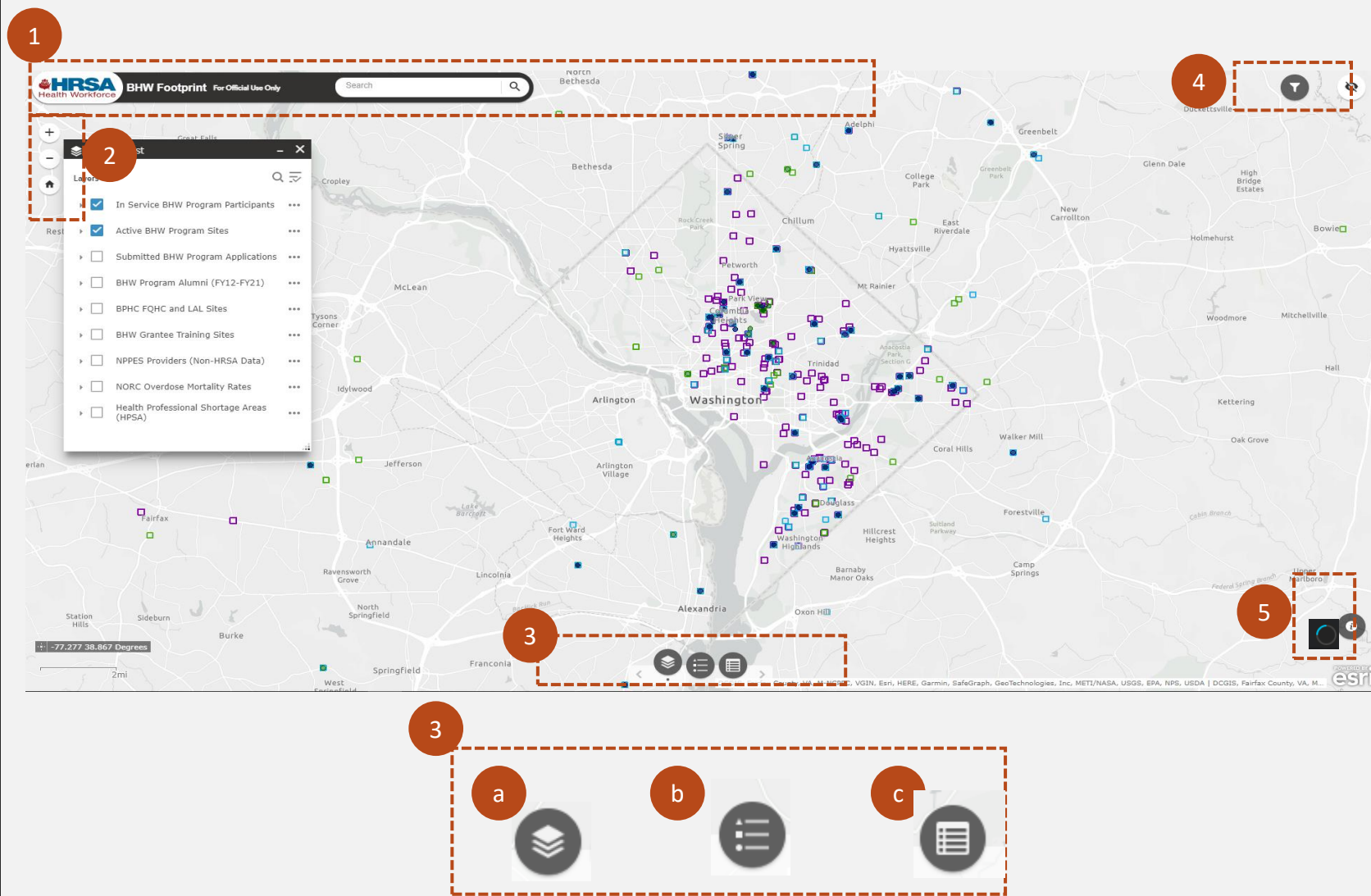


# COMMON FEATURES

The following page provides a brief description of some of the most common features contained within the map.

## FEATURES

- 1. Search Function** – Allows the user to search for specific addresses or location names. The user can click on the desired displayed result and will be taken to that location on the map.
- 2. Side Panel** – Allows the user to zoom in/out on the map and reset the map to the default view.
- 3. Widget Dock**
  - a) Layer List** – Allows users to select and deselect data layers to display on the map
  - b) Legend** – Displays definitions for the symbols on the map based on the user-selected data layers
  - c) Attribute Table** – Allows users to filter, view download the underlying dataset (limit of 1,000 records)
- 4. Filter & Map Overview**
  - 1. Filter** – Allows the user to filter the underlying data layers
  - 2. Map Overview** – Allows the user to quickly pan the map to another geographic location
- 5. Other**
  - 1. About** – Allows the user to view additional information about the map
  - 2. Loading Icon** – Indicates when the map is loading





# Getting Started: Adding Data Layers

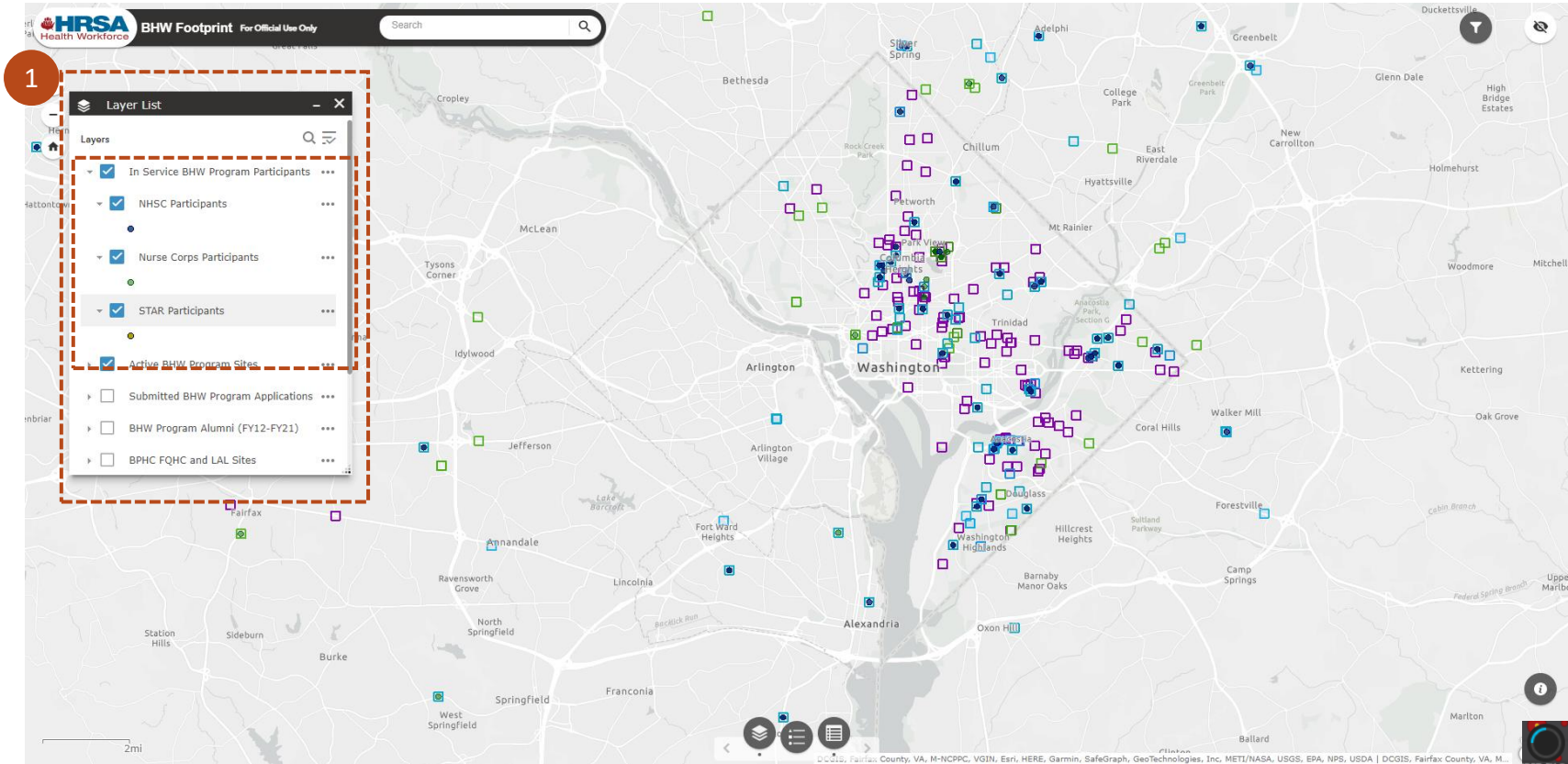
1

Select the **Data Layers** that you want to display on the map. Some layers are expandable (e.g. BHW Sites); click on the data layer to expand and collapse. When the data layer is expanding, the icons associated with each layer are presented.

Some data layers are only visible when zoomed closer into the map. Those layers will be greyed out when selected but not yet visible on the map.



The **Loading Icon** indicates when the map view is loading. Depending on the number of data layers selected and the field of view, the map may take up to 30 seconds to display all corresponding data points.

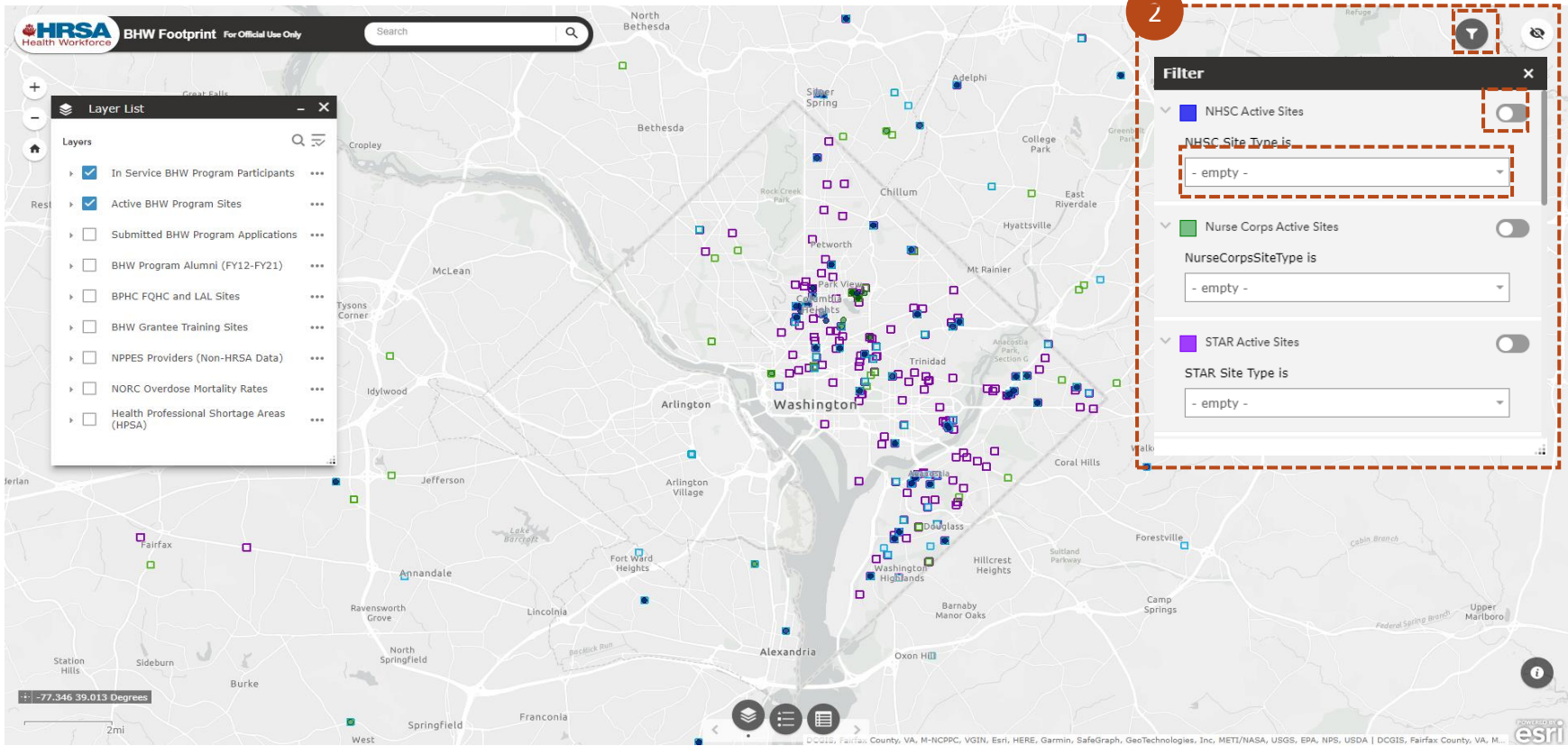


# Getting Started: Filtering the Data

- 2
- Open the **Filter** panel, select the desired filters, and click on the toggle to apply the filter. The corresponding symbols on the map will be filtered based on the user selections.
- Select filters by using the dropdown arrow or begin typing in the text field.



The **toggle icon** allows the user to turn the selected filters off and on for that particular data layer.



# Getting Started: Attribute Table

3 Open the Attribute Table widget to view the underlying data available in the map application. Each data layer has its own tab in the attribute table with data related to the records on the map. The user can click on the data layer header within the table to be taken to that layer's data. The attribute table can be closed by clicking and dragging the table to the bottom of the screen. The total number of records related to a selected data layer displays in the bottom left corner of the table.



The **Options Icon** allows the user to filter the data within a data layer by any attribute and export the data for that data layer to Excel. This is limited to a **maximum of 1,000** data records.

The **Filter by Map Extent** button allows the user to toggle whether the attribute table displays data from the entire map or only data that is currently in view on the map.

HRSA Health Workforce BHW Footprint For Official Use Only

Search

Layer List

- ☒ In Service BHW Program Participants
- ☒ Active BHW Program Sites
- ☐ Submitted BHW Program Applications
- ☐ BHW Program Alumni (FY12-FY21)
- ☐ BPHC FQHC and LAL Sites
- ☐ BHW Grantee Training Sites
- ☐ NPPES Providers (Non-HRSA Data)
- ☐ NORC Overdose Mortality Rates
- ☐ Health Professional Shortage Areas (HPSA)

209 features 0 selected

Program	Status Group	Site Name	Site GUID	Site Recruitment Profile ID	NHSC Site Type	NHSC Site Status	Nurse Corps Site Type	Nurse Corps Site Status	Max HPSA Score Primary Care	Max HPSA Score Dental	Max HPSA Score Mental Health	Address Line 1	Address Line 2	City	County	County FIPS Code	State	State Abbreviation
NHSC LRP	In Service	Mary's Center-Georgia Avenue Clinic	{6457E1E3-0DD9-4A81-A625-16A6CF833595}	{F2690D14-F069-4093-B1D4-C5D543127031}	Federally Qualified Health Centers (FQHC)	Active	Federally-Qualified Health Center	Active	20	25	22	3912 Georgia Avenue NW		Washington	District of Columbia	001	District of Columbia	DC
NHSC LRP	In Service	Mary's Center-344	{78AF940D-AA7D-4996-...}	{18661FC7-147C-4714-...}	Federally Qualified Health	Active	Federally-Qualified	Active	20	25	22	344 University		Silver Spring	Montgomery	031	Maryland	MD



# Data Layers



# SUBMITTED BHW PROGRAM APPLICATIONS

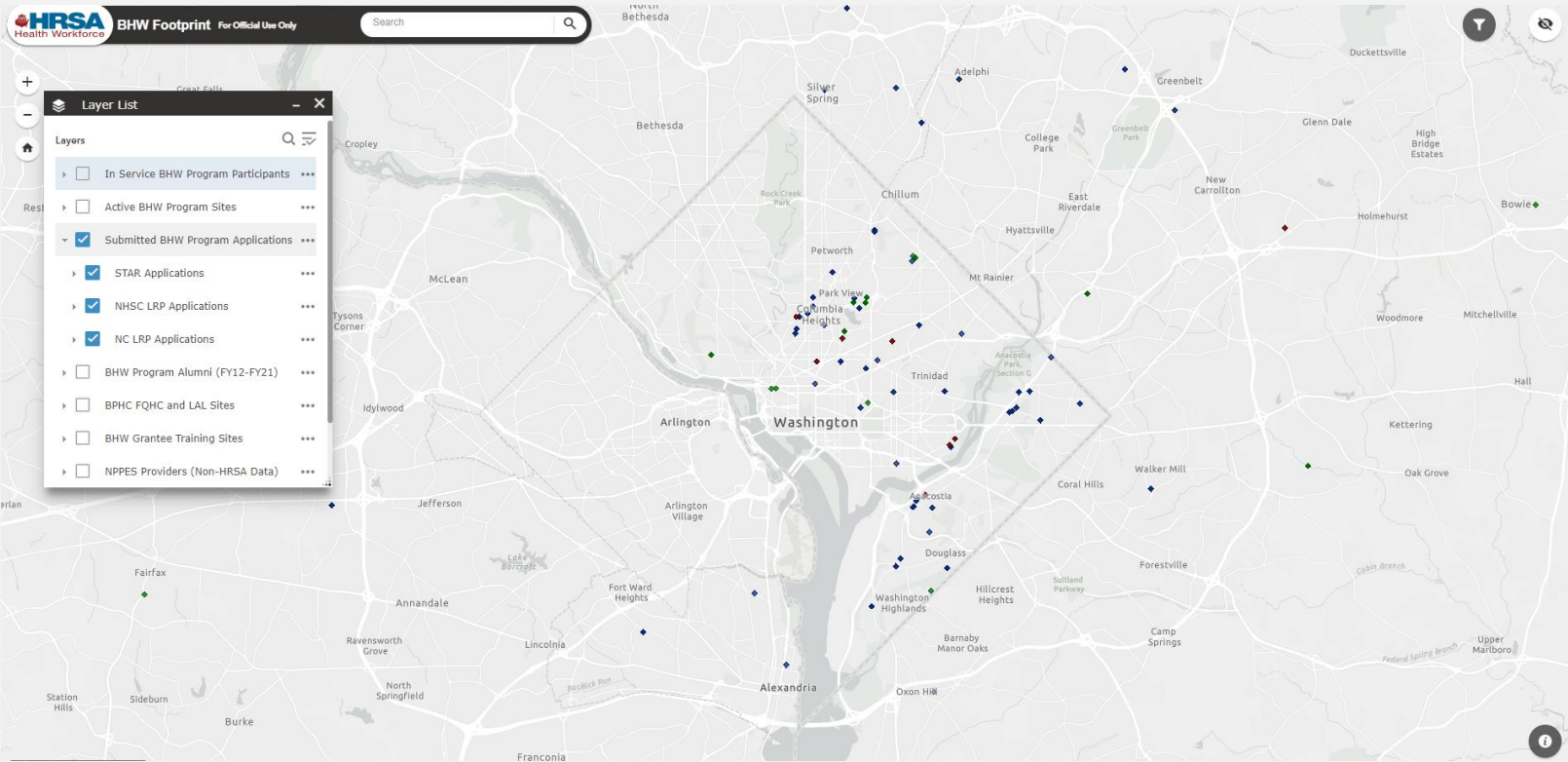
The Submitted BHW Program Applications data layer displays the current site addresses for National Health Service Corps Loan Repayment Program (NHSC LRP), Nurse Corps Loan Repayment Program (NC LRP), and Substance Use Disorder Treatment and Recovery Loan Repayment Program (STAR LRP) submitted eligible applications from the FY2020-FY2023 application cycles.

## DATA LAYER BREAKDOWN

- 1. **NHSC LRP Applications** – Blue diamonds display the site addresses for the NHSC LRP applicants during the FY2020-FY2023 application cycles.
- 2. **NC LRP Applications** – Green diamonds display the site addresses for the Nurse Corps LRP applicants during the FY2020-FY2023 application cycles.
- 3. **STAR LRP Applications** – Red diamonds display the site addresses for the STAR LRP applicants during the FY2021-FY2023 application cycles

## ABOUT THE DATA

- 1. **Where is the data sourced from?** BMISS Data Mart
- 2. **How often is the data refreshed?** Daily at 10:00 PM EST
- 3. **What is included in the data set?** Includes NHSC LRP, NC LRP, and STAR LRP applications for Fiscal Years 2020 to 2023



# IN SERVICE BHW PROGRAM PARTICIPANTS

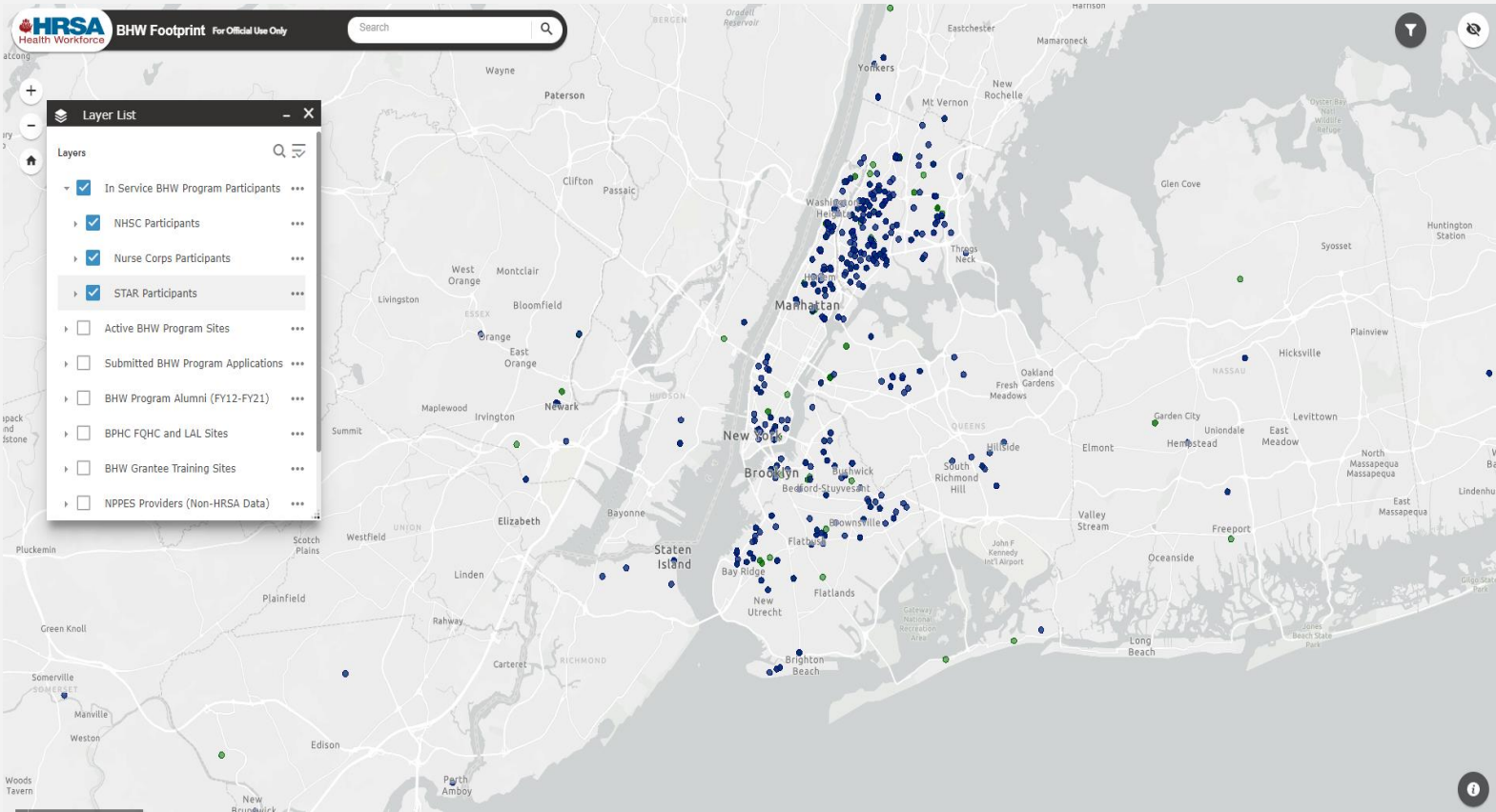
The **In Service BHW Program Participants** data layer displays the current site address for NHSC, Nurse Corps, and STAR participants who are currently in service and working at an approved BHW site.

## DATA LAYER BREAKDOWN

- 1. **NHSC Participants** – Blue pins display the site addresses for NHSC participants who are currently in service
- 2. **Nurse Corps Participants** – Green pins display the site addresses for Nurse Corps participants who are currently in service
- 3. **STAR Participants** – Gold pins display the site addresses for STAR participants who are currently in service

## ABOUT THE DATA

- 1. **Where is the data sourced from?** BMISS Data Mart
- 2. **How often is the data refreshed?** Daily at 10:00PM
- 3. **What is included in the data set?** Only includes NHSC, Nurse Corps, and STAR participants who are currently in service and working at an approved site. Does not include participants from the Faculty Loan Repayment Program (FLRP)

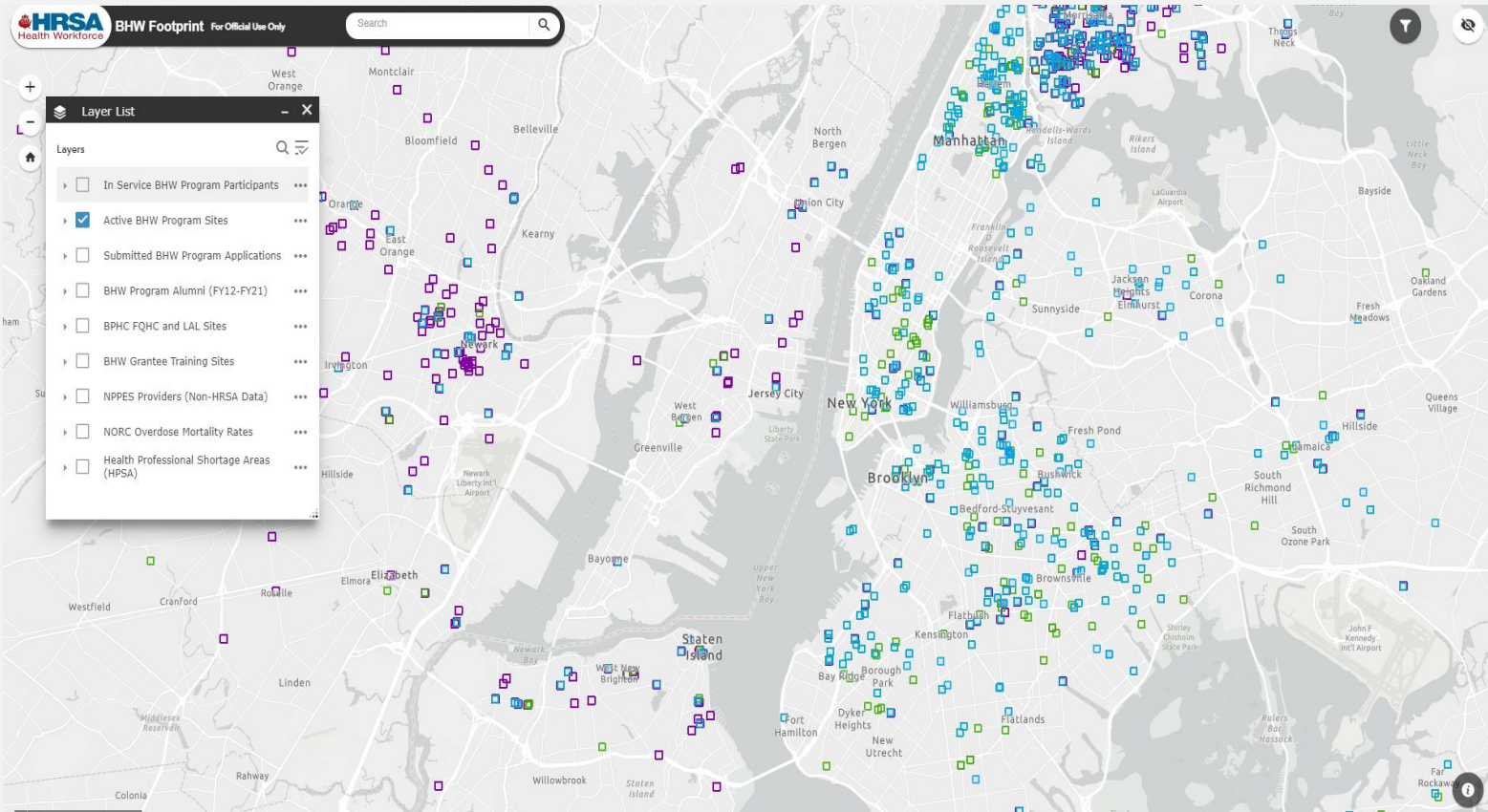


# ACTIVE BHW PROGRAM SITES

The **Active BHW Program Sites** data layer captures NHSC, Nurse Corps, and STAR site data from the BMISS Data Mart and allows users to plot active NHSC, Nurse Corps, and STAR sites on the map.

## DATA LAYER BREAKDOWN

- 1. **NHSC Active Sites** – Blue squares display the locations of all NHSC active sites
- 2. **Nurse Corps Active Sites** – Green squares display the locations of all Nurse Corps active sites
- 3. **STAR Active Sites** – Purple squares display the locations of all STAR active sites



## ABOUT THE DATA

- 1. **Where is the data sourced from?** BMISS Data Mart
- 2. **How often is the data refreshed?** Daily at 10:00PM EST
- 3. **What is included in the data set?** Only includes sites that are currently active for NHSC, Nurse Corps, or STAR



# BHW PROGRAM ALUMNI (FY12-21)

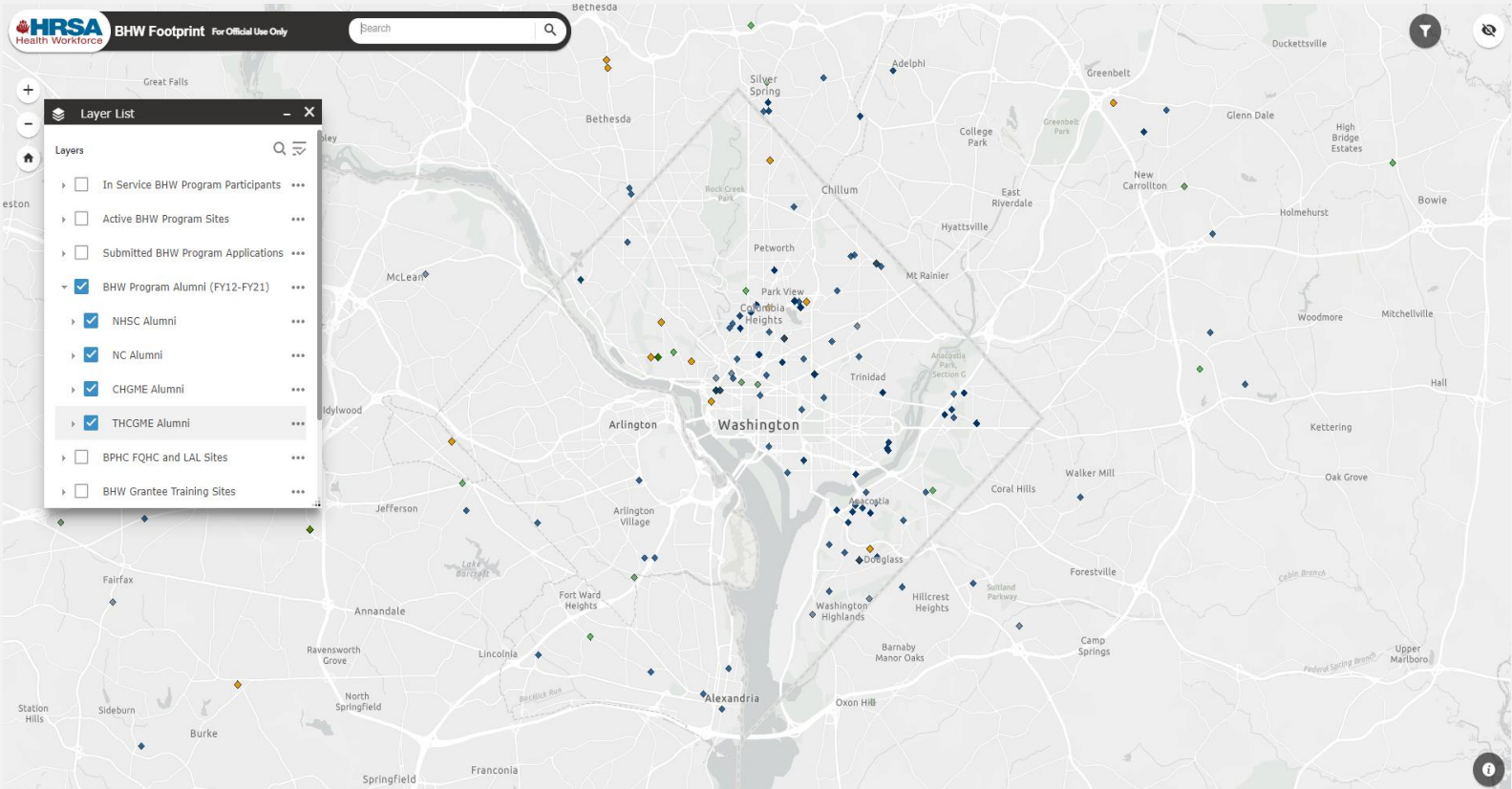
The **BHW Program Alumni (FY12-21)** data layer displays the current work location of clinicians who have completed service or training through one of BHW’s programs. The current dataset includes alumni from the following BHW Programs: National Health Service Corps (NHSC), Nurse Corps (NC), Children’s Hospitals Graduate Medical Education (CHGME), and Teaching Health Center Graduate Medical Education (THCGME)

## DATA LAYER BREAKDOWN

- 1. **NHSC LRP Alumni** – Blue diamonds display the current work addresses for NHSC LRP alumni who have completed service or training between FY2012-FY2021
- 2. **NHSC SP Alumni** – Blue diamonds display the current work addresses for NHSC SP alumni who have completed service or training between FY2012-FY2021
- 3. **NC LRP Alumni** – Green diamonds display the current work addresses for NC LRP alumni who have completed service or training between FY2012-FY2021
- 4. **NC SP Alumni** – Green diamonds display the current work addresses for NC SP alumni who have completed service or training between FY2012-FY2021
- 5. **CHGME Alumni** – Orange diamonds display the current work addresses for CHGME alumni who have completed service of training between FY2016-FY2021
- 6. **THCGME Alumni** – Orange diamonds display the current work addresses for THCGME alumni who completed service or training between FY2015-FY2021

## ABOUT THE DATA

- 1. **Where is the data sourced from?** BMISS Data Mart
- 2. **How often is the data refreshed?** Annually on October 1 of FY
- 3. **What is included in the data set?** Only includes BHW program alumni who completed service or training within the following years: NHSC (FY12-FY21), NC (FY12-FY21), CHGME (FY16-FY21), THCGME (FY15-FY21)



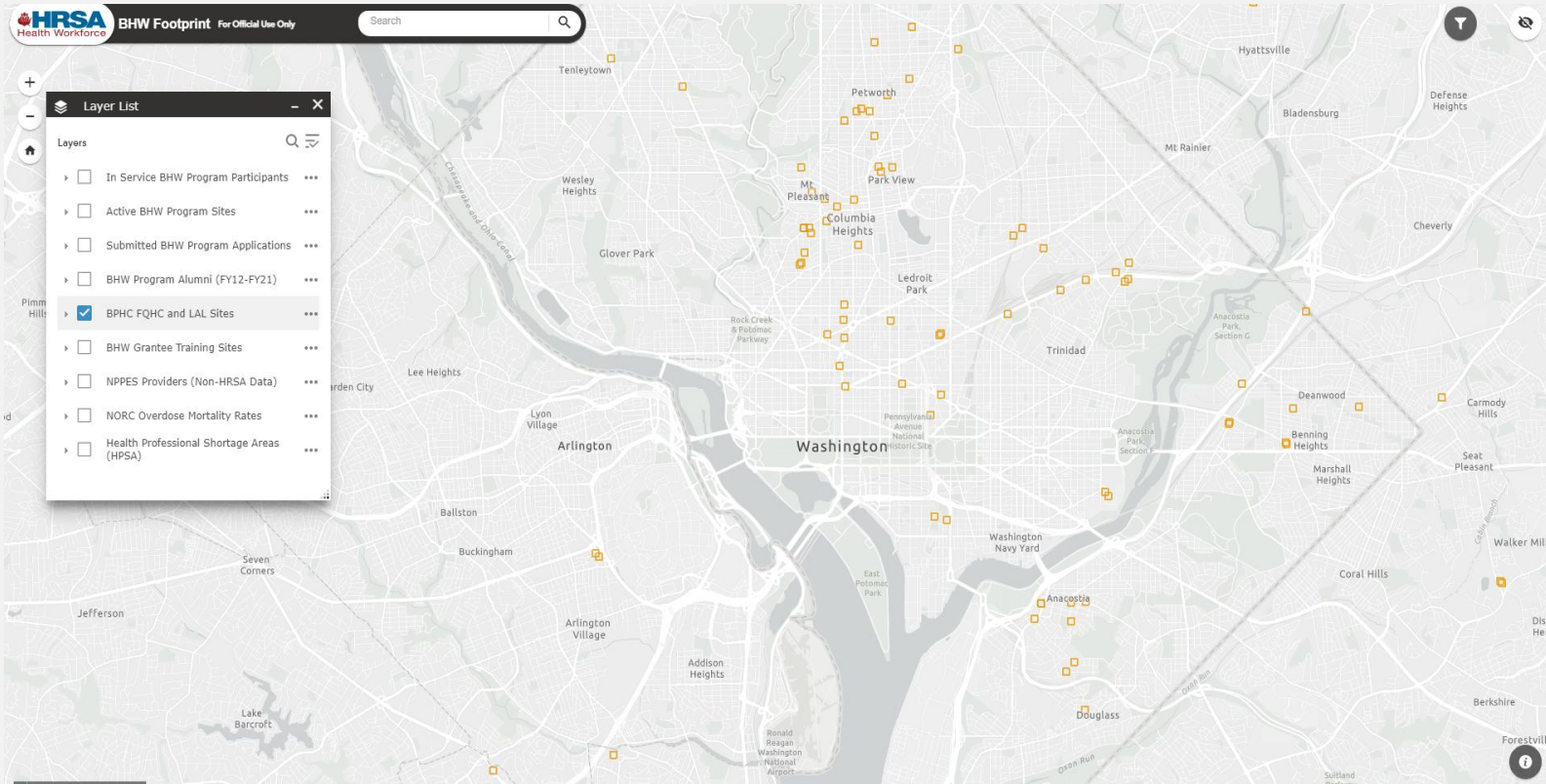
The **BPHC FQHC & LAL Sites** data layer includes all Federally Qualified Health Centers (FQHC) and Look-Alike (LAL) sites recognized by the Bureau of Primary Health Care (BPHC). This data is sourced from the HRSA Data Warehouse as a publicly available map service.

## DATA LAYER BREAKDOWN

1. **BPHC FQHC and LAL Sites** – Orange squares represent the locations for all BPHC FQHC and Look-Alike Sites

## ABOUT THE DATA

1. **Where is the data sourced from?** HRSA Data Warehouse
2. **How often is the data refreshed?** Refresh schedule determined by HDW
3. **What is included in the data set?** Includes Federally Qualified Health Centers (FQHC) and Look-Alike sites recognized by the Bureau of Primary Health Care (BPHC)



# BHW GRANTEE TRAINING SITES

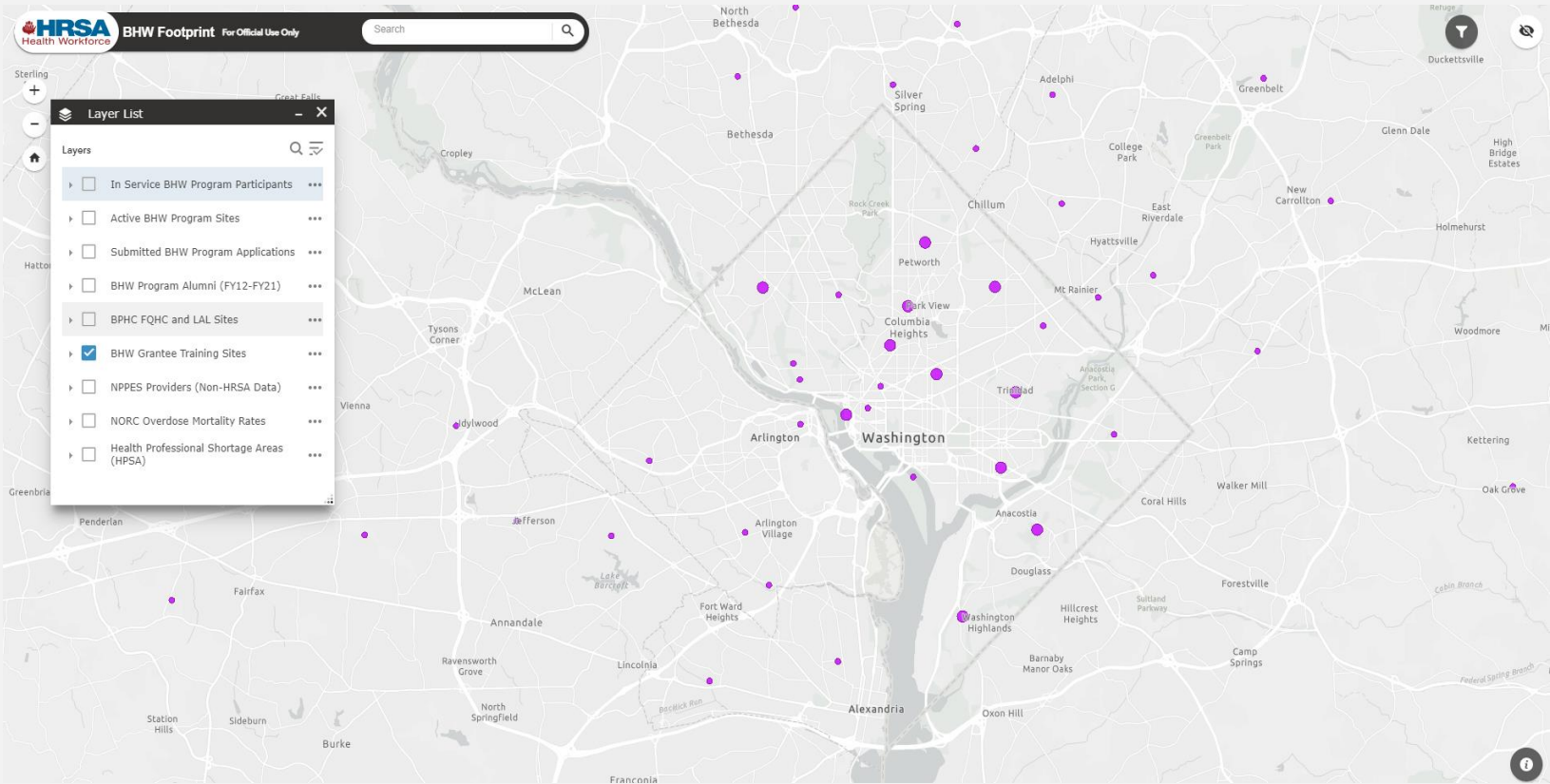
The **BHW Grantee Training Sites** data layer captures the grantee training sites across BHW’s grant programs. Individual training sites are shown as pins on the map. The layer can also be aggregated at the state level and zip code level.

## DATA LAYER BREAKDOWN

- BHW Grantee Training Sites** – Purple circles represent the counts of grantee training sites across BHW’s grant programs aggregated at the state level and zip code level. Zooming in allows the user to see the individual site locations. When a zip code or state level grantee training site circle is selected, the user will see the count of sites in that zip code or state. They will also be able to navigate to the individual site records from a list.

## ABOUT THE DATA

- Where is the data sourced from?** Grantee Training Sites Spreadsheet
- How often is the data refreshed?** Annually in April of FY
- What is included in the data set?** Includes BHW grantee training sites at the individual site location and aggregated at the state and zip code level





# NPPES PROVIDERS

The National Plan & Provider Enumeration System (NPPES) Providers data layer captures the aggregate counts of healthcare providers in each County or State based on provider-reported primary and secondary practice addresses as reported to the Centers for Medicare and Medicaid Services (CMS), as well as PCO-reported additional practice addresses. These providers are not necessarily funded by BHW. The current dataset includes providers with taxonomies relevant to BHW that are associated with the following groupings:

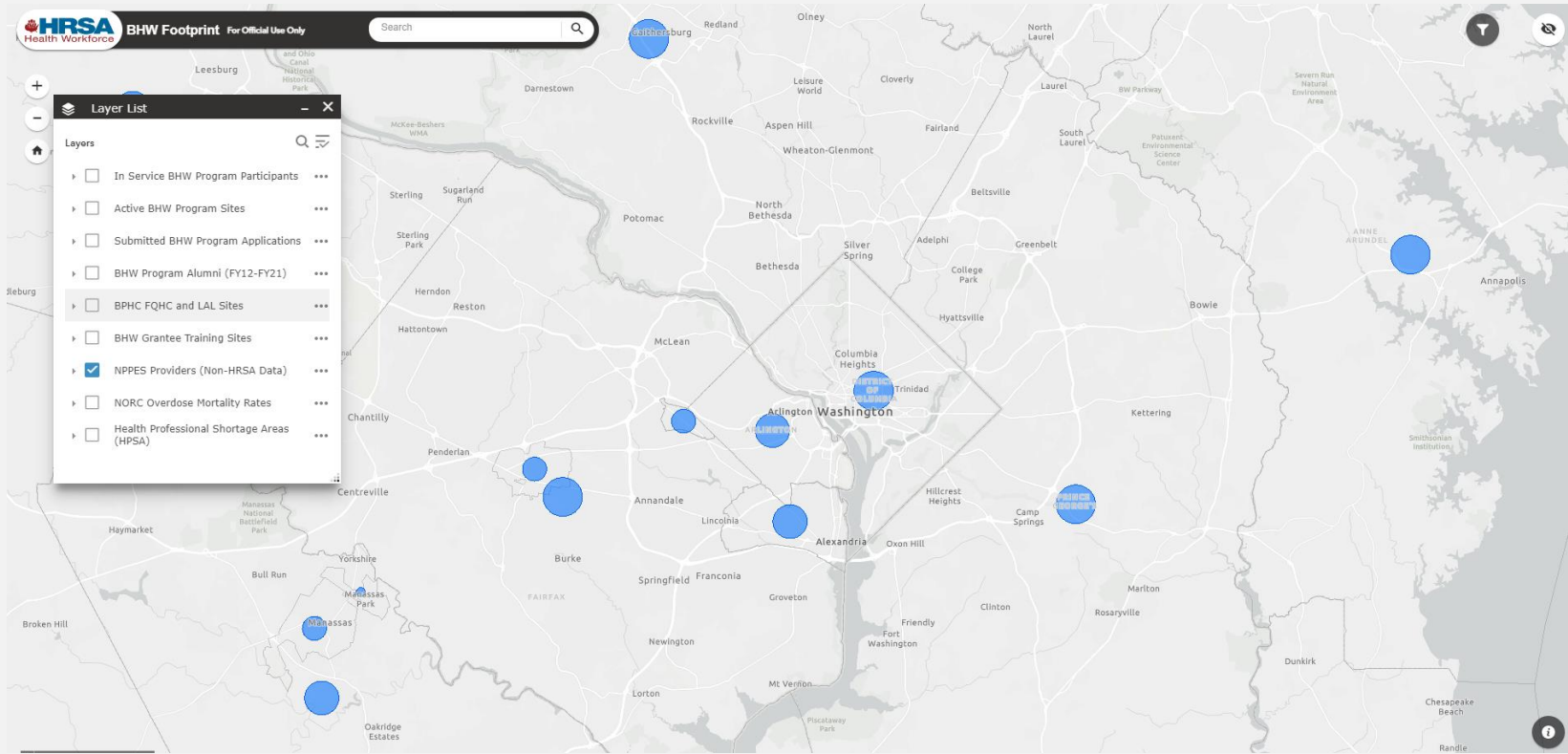
- Allopathic & Osteopathic Physicians
- Behavioral Health and Social Service Providers
- Emergency Medical Service Providers
- Nursing Service Providers
- Physician Assistants and Advanced Practice Nursing Providers
- Podiatric Medicine and Surgery Providers
- Respiratory, Rehabilitative and Restorative Providers
- Student, Health Care
- Dental Providers
- Pharmacy Service Providers
- Other Service Providers
  - Case Manager/Care Coordinator
  - Community Health Worker
  - Health Educator
  - Health & Wellness Coach
  - Midwife, Lay
  - Midwife
  - Peer Specialist

## DATA LAYER BREAKDOWN

1. **NPPES Providers** – Blue circles represent the counts of healthcare providers aggregated at the state and county level

## ABOUT THE DATA

1. **Where is the data sourced from?** NPPES, SDMS, and BMISS
2. **How often is the data refreshed?** Monthly
3. **What is included in the data set?** Includes both primary and secondary practice locations of providers based on NPPES reporting





# HEALTH PROFESSIONAL SHORTAGE AREAS (HPSAS)

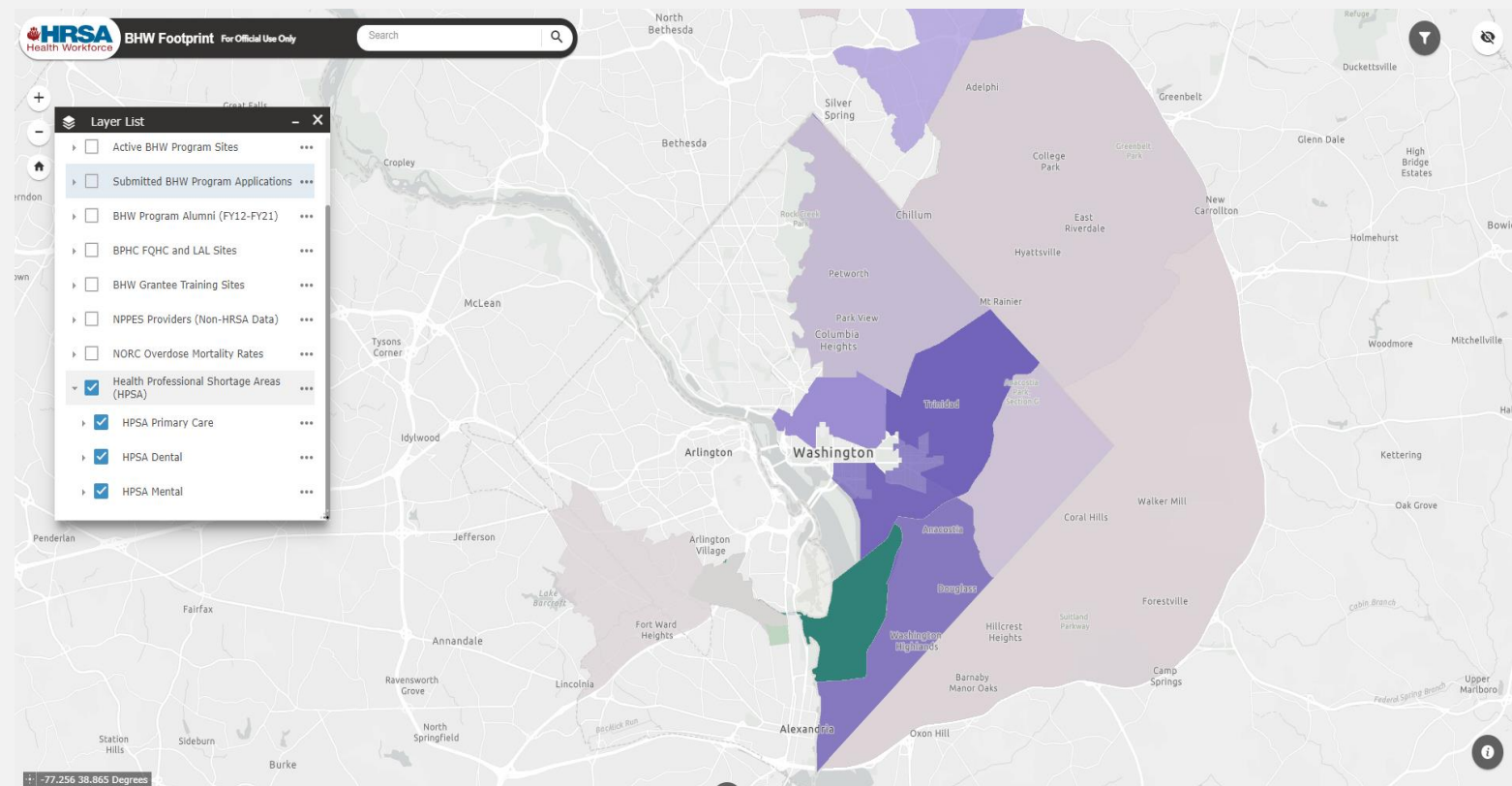
The **Health Professional Shortage Areas (HPSAs)** data layer captures HPSA data from the Shortage Designation Management System (SDMS) GIS database and allows users to plot Primary Care, Mental Health, and Dental Health HPSAs on a map.

## DATA LAYER BREAKDOWN

- Primary Care HPSA** – Green polygons display the Primary Care HPSA data. Based on its Primary Care HPSA score, each HPSA area is correlated with a different shade of purple representing one of three tiers. Filters can be used to select specific Designation Types and/or Designation Statuses, as well as selection of a range of HPSA scores.
- Mental Health HPSA** – Blue polygons display the Mental Health HPSA data. Based on its Mental Health HPSA score, each HPSA area is correlated with a different shade of blue representing one of three tiers. Filters can be used to select specific Designation Types and/or Designation Statuses, as well as selection of a range of HPSA scores.
- Dental Health HPSA** – Purple polygons display the Dental Health HPSA data. Based on its Dental Health HPSA score, each HPSA area is correlated with a different shade of green representing one of three tiers. Filters can be used to select specific Designation Types and/or Designation Statuses, as well as selection of a range of HPSA scores.

## ABOUT THE DATA

- Where is the data sourced from?** SDMS GIS Database
- How often is the data refreshed?** Daily at 10:00PM EST
- What is included in the data set?** Only includes Geographic and Population HPSAs that are Designated or Proposed for Withdrawal. Does not include Auto-HPSAs or MUA/Ps.



# NORC OVERDOSE MORTALITY RATES

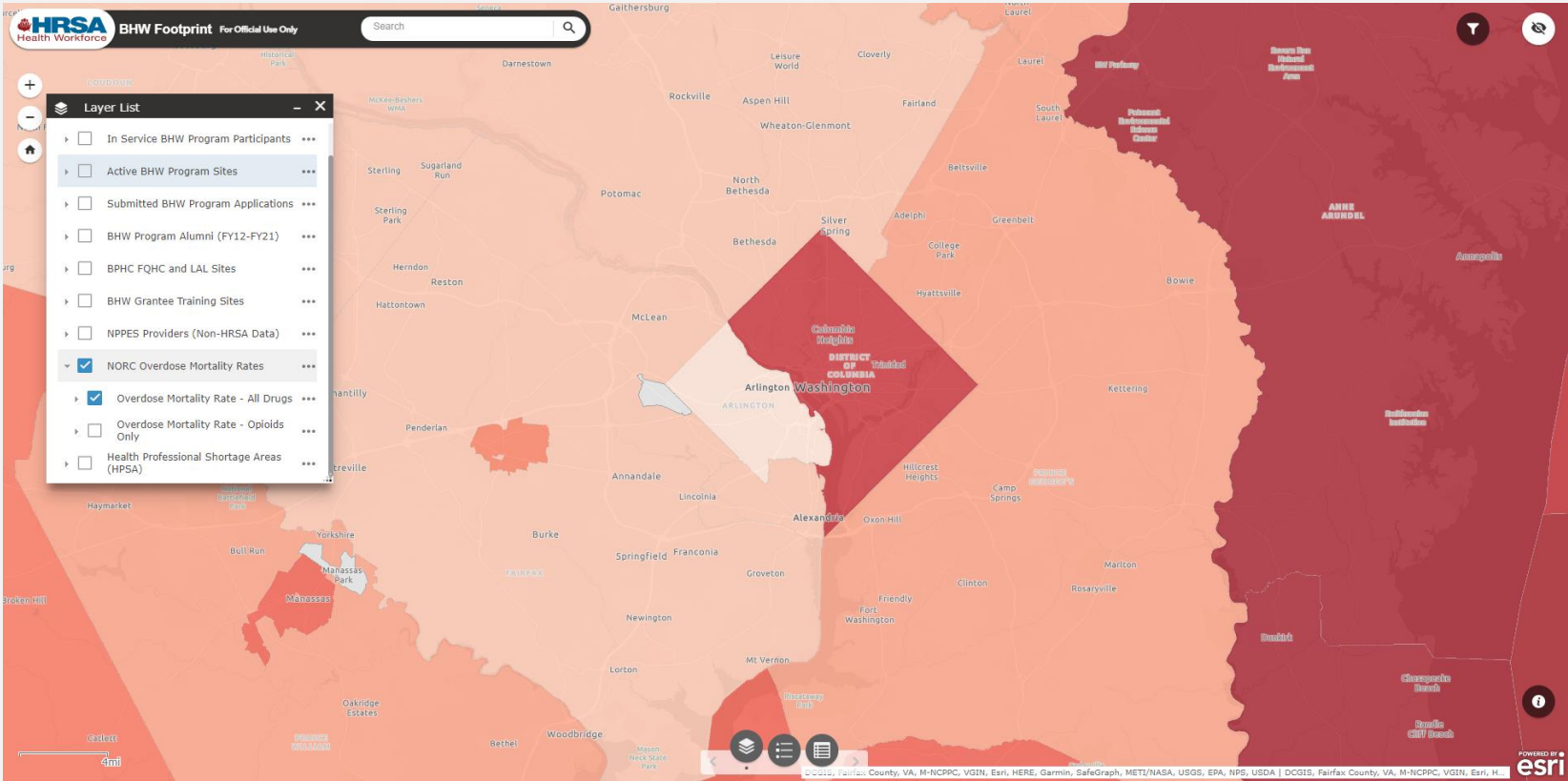
The National Opinion Research Center (NORC) Overdose Mortality data layer captures U.S. overdose Mortality data from NORC at the University of Chicago and allows users to plot Overdose Mortality Rates (All Drugs and Opioids Only) on a map. Users can also filter the data set by various attributes included within the data layer.

## DATA LAYER BREAKDOWN

1. **Mortality Rate (All Drugs)** – Red polygons display Overdose Mortality Rate for All Drugs. Based on its mortality rate, each county is correlated with a different shade of red representing one of seven ranges. Filters can be used to select ranges of mortality rate.
2. **Mortality Rate (Opioids Only)** – Red polygons display Overdose Mortality Rate for Opioids. Based on its mortality rate, each county is correlated with a different shade of red representing one of seven ranges. Filters can be used to select ranges of mortality rate.

## ABOUT THE DATA

1. **Where is the data sourced from?** NORC at the University of Chicago
2. **How often is the data refreshed?** Annually
3. **What is included in the data set?** Includes latest data set within the time period 2015-2019



# Data Dictionary



# Data Dictionary: In Service BHW Program Participants (part 1)

Data Attribute	Definition
Program	The BHW program (NHSC, Nurse Corps, STAR) associated with the participant
Status Group	Indicates whether or not the BHW participant is currently In Service or not
Site Name	The name of the health care facility
Site GUID	The Global Unique Identifier (GUID) for a health care facility
Site Recruitment Profile ID	Indicates the site recruitment profile ID of an associated site
NHSC Site Type	Indicates the National Health Service Corps (NHSC) site type
NHSC Site Status	Indicates whether the health care facility is currently an active National Health Service Corps (NHSC) site
Nurse Corps Site Type	Indicates the Nurse Corps (NC) site type
Nurse Corps Site Status	Indicates whether the health care facility is currently an active Nurse Corps (NC) site
STAR Site Type	Indicates the Substance Use Disorder Treatment and Recovery (STAR) site type
STAR Site Status	Indicates whether the health care facility is currently an active Substance Use Disorder Treatment and Recovery (STAR) site
Site Rural Status	Determines whether the site is located in a geographical area that is a non non-metropolitan county or designated by the Federal Office of Rural Health Policy as being considered rural
Max HPSA Score Primary Care	The Primary Care Health Professional Shortage Area (HPSA) score associated with the site (between 0-25). The Primary Care Health Professional Shortage Area (HPSA) score associated with the site (between 0-25). <a href="#">The HPSA Scoring criteria</a> can be found at the link.
Max HPSA Score Dental Health	The Dental Health Professional Shortage Area (HPSA) score associated with the site (0-26). <a href="#">The HPSA Scoring criteria</a> can be found at the link.
Max HPSA Score Mental Health	The Mental Health Professional Shortage Area (HPSA) score associated with the site (between 0-24). <a href="#">The HPSA Scoring criteria</a> can be found at the link.





# Data Dictionary: In Service BHW Program Participants (part 2)

Data Attribute	Definition
Address Line 1	The street address portion of the address of the health care facility
Address Line 2	The street address portion of the address of the health care facility
City	The city name portion of the address of the health care facility
County	The county name portion of the address of the health care facility
County FIPS Code	The county Federal Information Processing Standards (FIPS) code of the health care facility
State	The state name portion of the address of the health care facility
State FIPS Code	The state Federal Information Processing Standards (FIPS) code of the health care facility
Latitude	The latitude coordinates of the health care facility
Longitude	The longitude coordinates of the health care facility

# Data Dictionary: Submitted BHW Program Applications (part 1)

Data Attribute	Definition
Fiscal Year	Indicates application cycle Fiscal Year
Program Abbreviation	Indicates application program abbreviation
Program Sub-Type	Indicates application program sub-type
Award Type	Indicates application award type
Application Status	Indicates application status
Address Line 1	The street address portion of the address of the application site
Address Line 2	The street address portion of the address of the application site
City	The city name portion of the address of the application site
County	The county name portion of the address of the application site
State	The state name portion of the address of the application site
Latitude	The latitude coordinates of the application site
Longitude	The longitude coordinates of the application site
Postal Code	Postal Code of application site address

# Data Dictionary: Submitted BHW Program Applications (part 2)

Data Attribute	Definition
Site Name	Indicates name of the application site
NHSC Site Type	Indicates the National Health Service Corps (NHSC) site type
NHSC Site Status	Indicates whether the application site is currently an active NHSC site
Nurse Corps Site Type	Indicates the Nurse Corps (NC) site type
Nurse Corps Site Status	Indicates whether the application site is currently an active NC site
STAR Site Type	Indicates the Substance Use Disorder Treatment and Recovery (STAR) site type
STAR Site Status	Indicates whether the health care facility is currently an active STAR site
Site Rural Status	Determines whether the site is located in a geographical area that is a non non-metropolitan county or designated by the Federal Office of Rural Health Policy as being considered rural
HPSA Score	Indicates HPSA score of application site
Site Offers Telehealth Services	Indicates whether or not application site offers telehealth services

# Data Dictionary: Active BHW Program Sites (part 1)

Data Attribute	Definition
Site ID	The unique identification number (ID) for a health care facility
Site GUID	The Global Unique Identifier (GUID) for a health care facility
Site Name	The name of the health care facility
NHSC Site Type	Indicates the National Health Service Corps (NHSC) site type
NHSC Site Status	Indicates whether the health care facility is currently an active NHSC site
Nurse Corps Site Type	Indicates the Nurse Corps (NC) site type
Nurse Corps Site Status	Indicates whether the health care facility is currently an active NC site
STAR Site Type	Indicates the Substance Use Disorder Treatment and Recovery (STAR) site type
STAR Site Status	Indicates whether the health care facility is currently an active STAR site
Phone	The phone number of the primary point of contact at the health care facility
Fax	The fax number of the primary point of contact at the health care facility
Email	The email address for the primary point of contact at the health care facility
Site Rural Status	Determines whether the site is located in a geographical area that is a non non-metropolitan county or designated by the Federal Office of Rural Health Policy as being considered rural
Max HPSA Score Primary Care	The Primary Care Health Professional Shortage Area (HPSA) score associated with the site (between 0-25). <a href="#">The HPSA scoring criteria</a> can be found at the link.
Max HPSA Score Dental Health	The Dental Health Professional Shortage Area (HPSA) score associated with the site (between 0-26). <a href="#">The HPSA scoring criteria</a> can be found at the link.
Max HPSA Score Mental Health	The Mental Health Professional Shortage Area (HPSA) score associated with the site (between 0-25). <a href="#">The HPSA scoring criteria</a> can be found at the link.





# Data Dictionary: Active BHW Program Sites (part 2)

Data Attribute	Definition
Address Line 1	The street address portion of the address of the health care facility
Address Line 2	The street address portion of the address of the health care facility
City	The city name portion of the address of the health care facility
County	The county name portion of the address of the health care facility
County FIPS Code	The county Federal Information Processing Standards (FIPS) code of the health care facility
State	The state name portion of the address of the health care facility
State Abbreviation	The abbreviated state name portion of the address of the health care facility
State FIPS Code	The state Federal Information Processing Standards (FIPS) code of the health care facility
Country	The country name portion of the address of the health care facility
Country Abbreviation	The abbreviated country name portion of the address of the health care facility
Latitude	The latitude coordinates of the health care facility
Longitude	The longitude coordinates of the health care facility
MCD FIPS	The minor civil division (MCD) Federal Information Processing Standards (FIPS) code of the health care
Census Tract Code	The census tract code of the health care facility
Region	The region number as determined by HRSA's <a href="#">Office of Regional Operations</a> of the health care facility
Congressional District Code	The congressional district code of the health care facility
Congressional District Name	The congressional district name of the health care facility



# Data Dictionary: BHW Program Alumni (FY12-21) (part 1)

Data Attribute	Definition
Program	The BHW program (NHSC, Nurse Corps) which the alumni completed service
Program Latitude	The latitude which the BHW alumni worked during their service
Program Longitude	The longitude which the BHW alumni worked during their service
Program City	The city which the BHW alumni worked during their service
Program State	The state which the BHW alumni worked during their service
Program County	The county which the BHW alumni worked during their service
Program Census Tract	The census tract which the BHW alumni worked during their service
Program Grantee	Indicates which BHW grant program is associated with the alumni during their service (CHGME/THCME only)
Current Address Line 1	The current work address of BHW alumni
Current City	The city which the BHW alumni currently works
Current State	The state which the BHW alumni currently works
Current County	The county which the BHW alumni currently works



# Data Dictionary: BHW Program Alumni (FY12-21) (part 2)

Data Attribute	Definition
Current Latitude	The latitude at which the BHW alumni currently works
Current Longitude	The longitude at which the BHW alumni currently works
Current County FIPS	The current county in which the BHW alumni currently works
Current Census Tract	The current census tract in which the BHW alumni currently works
Current MCD	The current MCD in which the BHW alumni currently works
Current Designation Name	The designation name in which the BHW alumni currently works
Currently in a HPSA	Indicates whether the BHW alumni currently works in a HPSA
Currently in a MUC	Indicates whether the BHW alumni currently works in a MUC
Current Rural Status	Indicates whether the BHW alumni currently works in a rural area
Currently Practicing	Indicates whether the BHW alumni is currently practicing

# Data Dictionary: BPHC FQHC & LAL Sites

Data Attribute	Definition
Site Name	The name of the health care facility
Health Center Type	The health center service delivery site type. The health center service delivery site type indicates whether a given health center service delivery site offers direct patient care, functions in an administrative capacity, or both.
Health Center Location Type	Represents the description of the scope of operations for a health center service delivery site location
Health Center Location Setting	The description of the location setting for a health center service delivery site and is used to classify the site according to the type of institution to which it may be affiliated.
Address Line 1	The street address portion of the address of a health care facility
City	The city name portion of the address of a health care facility
County	The county name portion of the address of a health care facility
State	The state name portion of the address of a health care facility
Zip Code	The zip code portion of the address of a health care facility
Current Phone	The phone number for the point of contact at the health care facility parent organization
Fax	The fax number of the point of contact at the health care facility parent organization
Site URL	The URL for the health care facility

# Data Dictionary: BHW Grantee Training Sites

Data Attribute	Definition
State	The state or territory name
City	The city name
Zip Code	The U.S. Postal Service ZIP Code
Address Line 1	The street address of the grantee training site
Grantee Site Count	The aggregated number of BHW grantee training sites in a particular state or zip code
Grantee Program Name	The program name associated with a grant
Site Name	The name of the grantee training site



# Data Dictionary: National Plan & Provider Enumeration System (NPPES) Providers

Data Attribute	Definition
State	The state or territory name
State FIPS	The state Federal Information Processing Standards (FIPS) code
County	The county name
Allopathic & Osteopathic Physicians	The aggregated number of Allopathic and Osteopathic Physicians currently in practice in a state or county
Behavioral Health & Social Service Providers	The aggregated number of Behavioral Health and Social Service Providers currently in practice in a state or county
Emergency Medical Service Providers	The aggregated number of Emergency Medical Service Providers currently in practice in a state or county
Nursing Service Providers	The aggregated number of Nursing Service Providers currently in practice in a state or county
Physician Assistants & Advanced Practice Nursing Providers	The aggregated number of Physician Assistants and Advanced Practice Nursing Providers currently in practice in a state or county
Podiatric Medicine & Surgery Service Providers	The aggregated number of Podiatric Medicine and Surgery Service Providers currently in practice in a state or county
Respiratory, Developmental, Rehabilitative and Restorative Service Providers	The aggregated number of Respiratory, Developmental, Rehabilitative and Restorative Service Providers currently in practice in a state or county
Student, Health Care	The aggregated number of Student, Health Care currently in practice in a state or county
Dental Providers	The aggregated number of Dental Providers currently in practice in a state or county
Pharmacy Service Providers	The aggregated number of Pharmacy Service Providers currently in practice in a state or county
Other Service Providers	The aggregated number of Other Service Providers currently in practice in a state or county. This taxonomy includes the following provider types: Case Manager/Care Coordinator, Community Health Worker, Health Educator, Health & Wellness Coach, Midwife, Lay, Midwife, Peer Specialist
Total County	The total count of providers currently in practice in a state or county



# Data Dictionary: Health Professional Shortage Areas (HPSAs)

Data Attribute	Definition
HPSA ID	The BMISS HPSA identification number
Designation Type ID	The Designation Type identification number
HPSA Name	The name associated with the HPSA
HPSA Score	The score of the HPSA
Designation Type	The Designation Type of the HPSA
CASE ID	The CASE ID of the HPSA
Designation Status	The designation status of the HPSA
Created Date	The date that the HPSA was created
Last Edited Date	The date that the HPSA was last edited
HPSA Type Code ID	The HPSA Type code identification number
Code ID	The code identification number

# Data Dictionary: NORC Overdose Mortality Rates

Data Attribute	Definition
County Name	The county name that the overdose mortality is being calculated for
County FIPS	The county Federal Information Processing Standards (FIPS) code that the overdose mortality is being calculated for
State	The state name that the overdose mortality is being calculated for
State FIPS	The state Federal Information Processing Standards (FIPS) code that the overdose mortality is being calculated for
Rural Status	Whether the county is located in a geographical area that is a non non-metropolitan county or is considered rural
County Population	The population of the county that the overdose mortality is being calculated for
Overdose Mortality Rate (All Drugs) – County	The mortality rate due to overdoses on all drugs for a county. The data is sourced from the National Opinion Research Center (NORC) at the University of Chicago and the overdose mortality rate is defined as age-adjusted mortality rate for population aged 15 to 64 with underlying cause of death as drug overdose.
Overdose Mortality Rate (Opioids Only) – County	The mortality rate due to opioid overdoses on all drugs for a county. The data is sourced from the National Opinion Research Center (NORC) at the University of Chicago and the overdose mortality rate is defined as age-adjusted mortality rate for population aged 15 to 64 with underlying cause of death as opioid drug overdose.