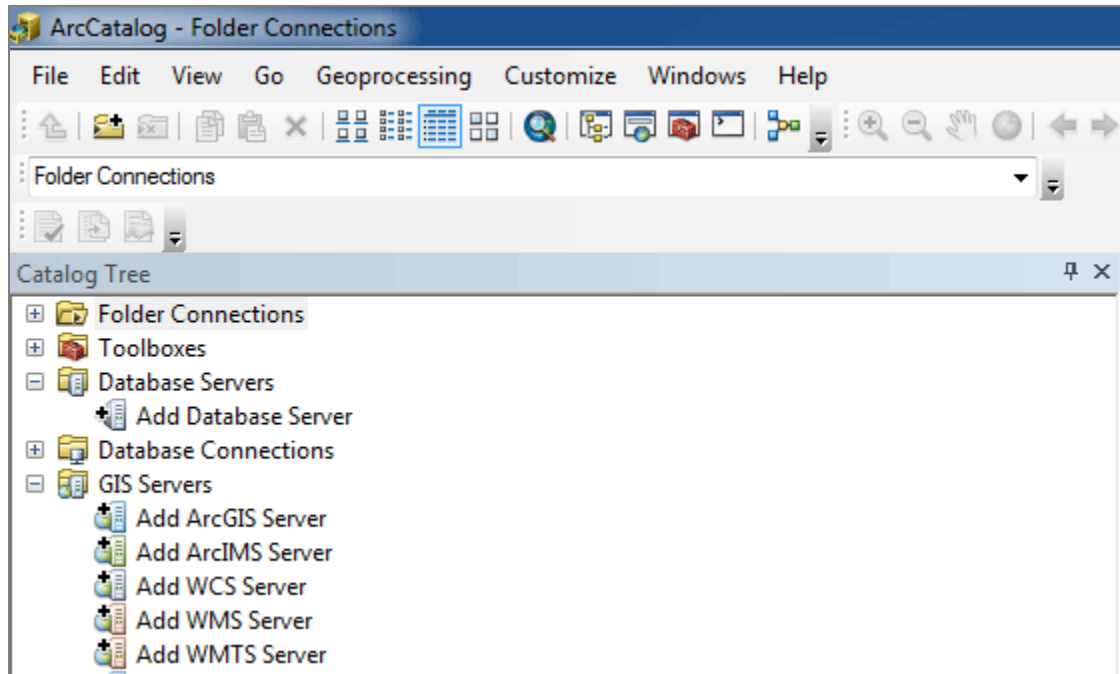


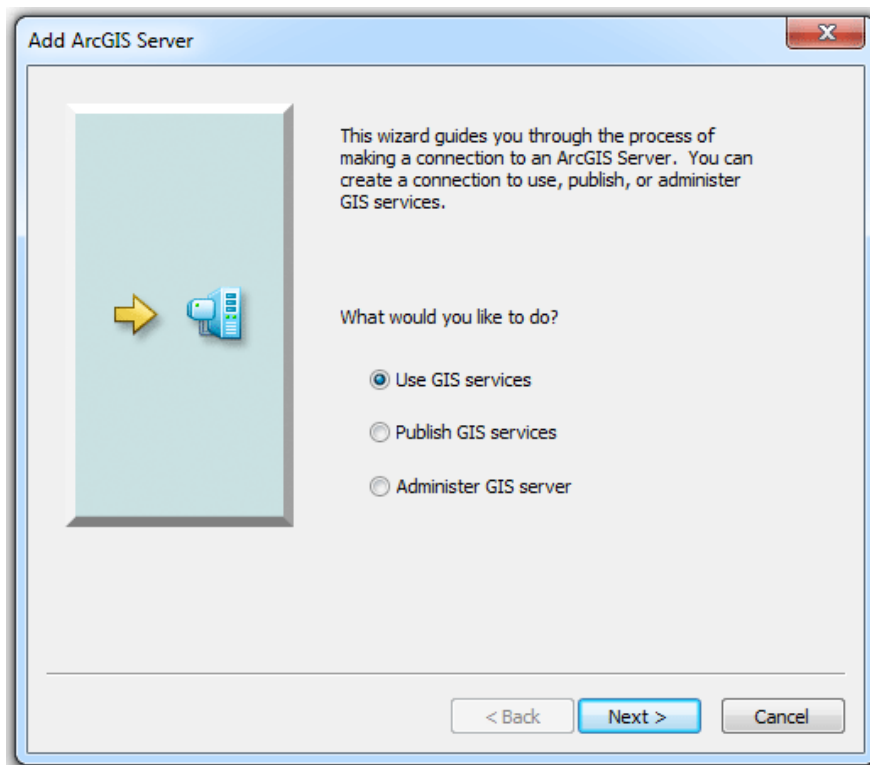
## Connect to HDW Map Data with ArcCatalog

Use the steps below to configure ArcCatalog (a component of the Esri ArcGIS software) to connect to and use the HRSA Data Warehouse (HDW) map and feature services located at <https://gis.hrsa.gov>.

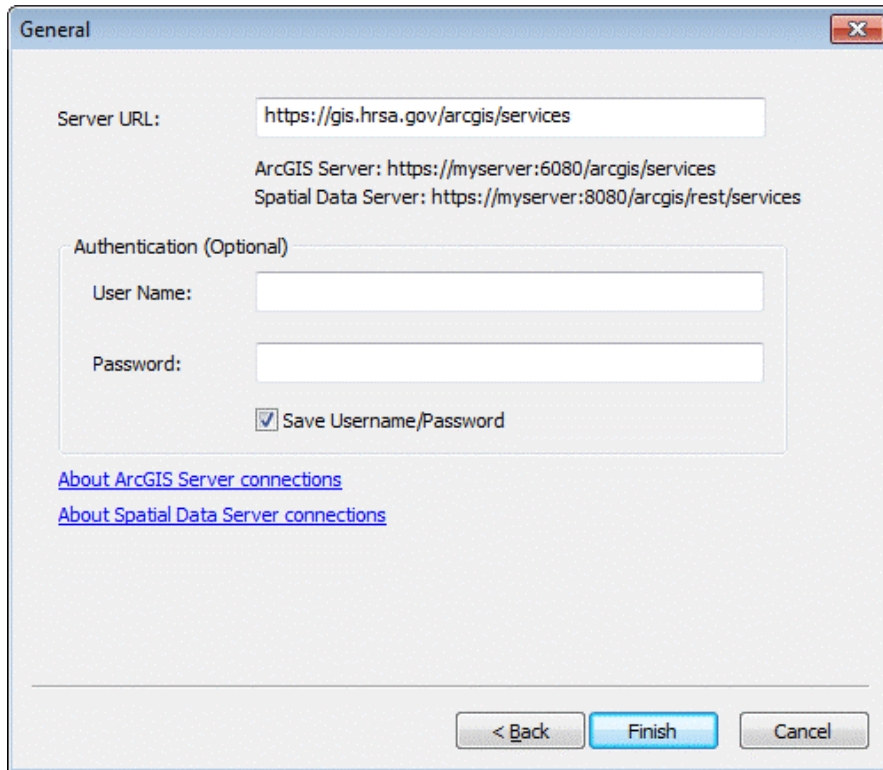
**STEP 1:** Open ArcCatalog from the desktop. From the left-side pane in the window, choose GIS Servers to expand the list of options.




**STEP 2:** Double-click the "Add ArcGIS Server" option.

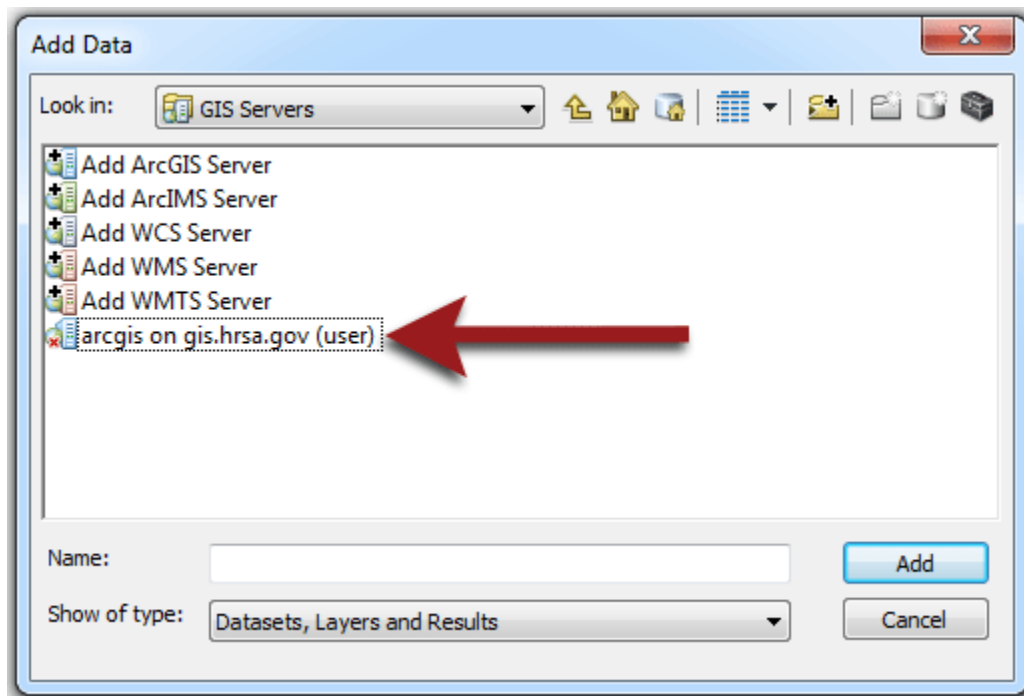


**STEP 3:** Choose “Use GIS services” option and click “Next.”

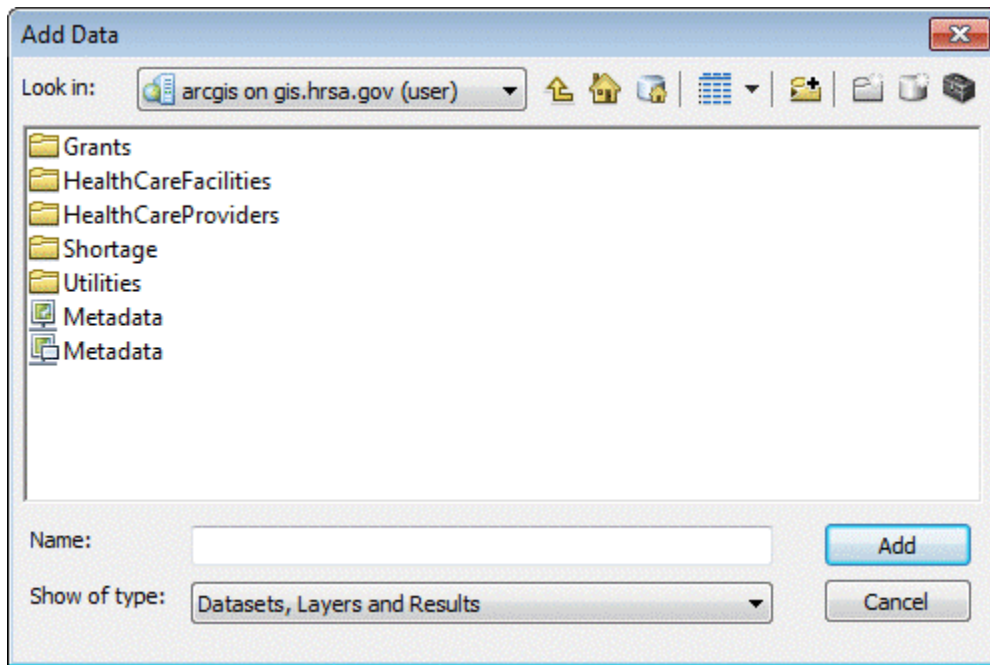




**STEP 4:** Enter https://gis.hrsa.gov/arcgis/services for Server URL. Skip user Name and Password. Finally, click “Finish” to create the connection in ArcCatalog.

**STEP 5:** Open ArcMap and click the Add Data button  on the ArcMap toolbar to open the “Add Data” dialog. Pull down the “Look in” list and choose “GIS Servers” as shown below

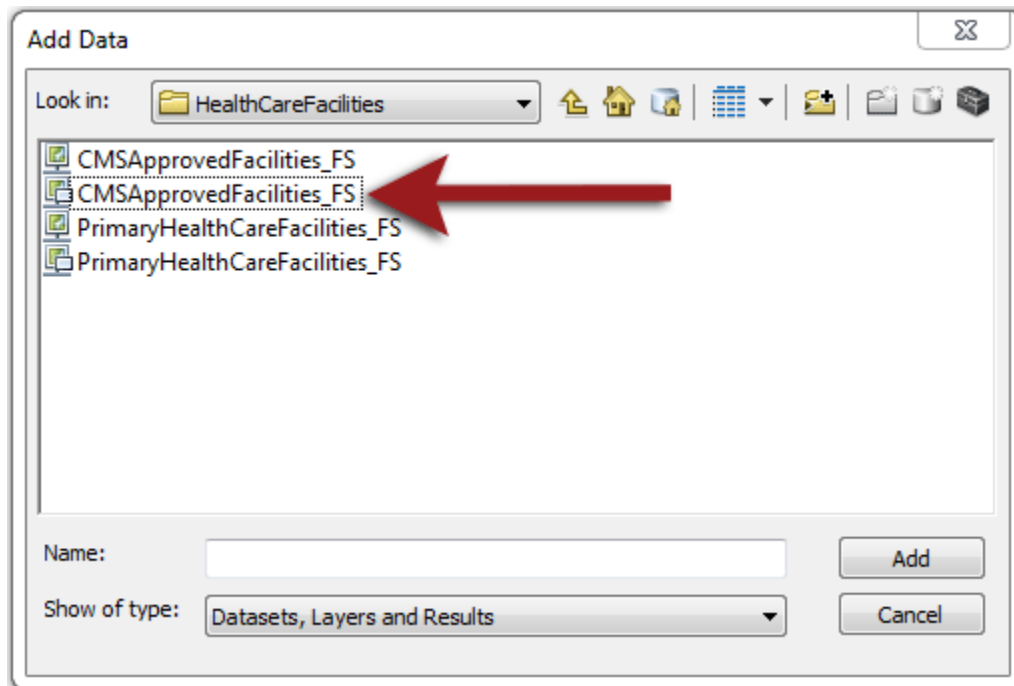


**STEP 6:** Select the server you previously created or used. Double-click on the server connection created in Step 2 - 5. Once connected to ArcGIS Server, map and feature services will be listed in the Add Data dialog box. Choose the map or feature service you want to add from the list of services.

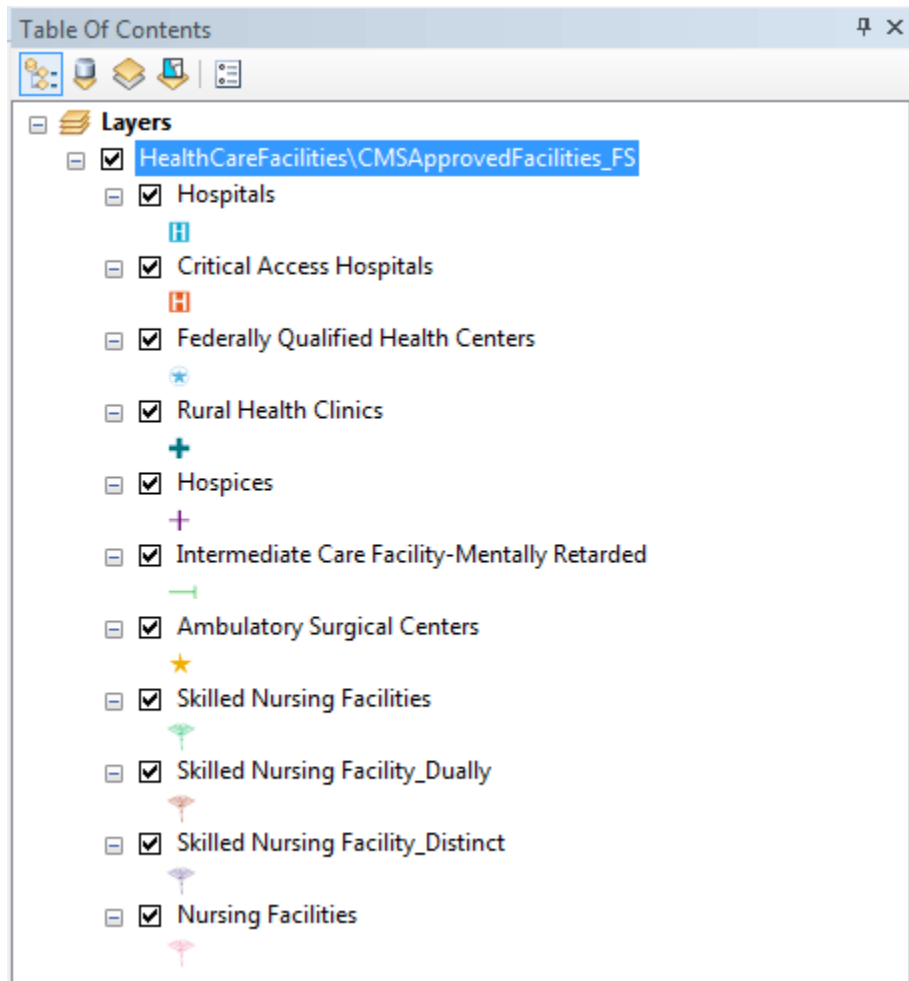


**STEP 7:** Map Services are represented by the  icon. Feature Services are represented by the  icon.

For map services and feature services, users can either add the whole service or drill down one more level, to select individual layers. The figure below illustrates selecting the ArcGIS feature service in the HealthCareFacilities folder.



**STEP 8:** The screenshot below shows the the contents of available features in ArcMap after adding the CMSApprovedFacilities\_FS feature service. Users may control the layers displayed in their map by selecting and unselecting the check box next to the layer name.



As the data in the data warehouse changes, the available features will also change. Each time data are updated, the change is noted on the About the Data page of the HDW website (<https://data.hrsa.gov/data/about>).

Note: To export from ArcMap or ArcCatalog, limit the dataset to 1,000 features or less. To download the full dataset, download the Shapefile data from the Data Downloads (<https://data.hrsa.gov/data/download>) page.